

General instructions:

- i) 15 minute prior reading allotted for question paper reading.
- ii) The question paper contains THREE sections – Reading, Grammar and Writing and Literature.
- iii) Attempt questions based on specific instructions for each part.

SECTION – A (Reading Skills)

I. Read the following passage carefully: (10x1=10)

1. Few guessed that this quiet, orphan girl growing up in New York City would one day become the First Lady of the United States. Even fewer thought she would become an author and lecturer and a woman much admired and loved by people throughout the world.
2. Bon Anna Eleanor Roosevelt in 1884, to wealthy, but troubled parents who both died when she was young, Roosevelt was cared for by her grandmother and sent to school in England. In 1905, she married her distant cousin, Franklin Delano Roosevelt. She and her husband had six children. Although, they were wealthy, her life was not easy and she suffered several personal tragedies. Her second son died when he was a baby. In 1921, her strong athletic husband was stricken with polio, which left him physically disabled for life.
3. Eleanor Roosevelt was a remarkable woman who had great intelligence and tremendous strength of character. She never let things get her down. She nursed her husband back to good health and encouraged him to remain in politics. She then helped him to become Governor of New York, and in 1933, the President of the United States.
4. While her husband was President, she took a great interest in all the affairs of the country. She became her husband's legs and eye's she visited prisons and hospital's she went down into mines, up scaffoldings and into factories. Roosevelt was tireless and daring. During the period of depression she travelled all over the country bringing goodwill, reassurance and helped people without food and jobs. During World War II she visited American soldiers in camps all over the world. The United States had never known a First Lady like her.
5. Roosevelt also kept in touch with the American people through a daily newspaper column called 'My Day'. She broadcast on the radio and delivered lectures, all first for a First Lady.

On the basis of your understanding of the above passage answer the questions that follow:

1. What do you mean by the first lady of the united state?
 - a) The wife of the president of the U.S
 - b) The lady president of the U.S
 - c) The highest ranked lady of the U.S
 - d) none of the above
2. Franklin Delano Roosevelt was her _____
 - a) relative
 - b) cousin
 - c) cousin husband
 - d) distant cousin
3. Her life was quite _____
 - a) troubled
 - b) comfortable
 - c) wealthy
 - d) easy
4. Her conduct shows that she was _____
 - a) strong willed
 - b) timed
 - c) weak willed
 - d) frustrated
5. The most appropriate title to para – 2 the passage is _____
 - a) The early life of Anna Eleanor Roosevelt
 - b) Childhood days of miss Roosevelt
 - c) Mrs. Roosevelt
 - d) The married life of Anna Eleanor Roosevelt
6. President Roosevelt was _____
 - a) Physically disabled
 - b) a weak husband
 - c) mentally related
 - d) a diseased person
7. The passage is about Mrs. Roosevelt's _____
 - a) courage, determination
 - b) married life
 - c) retarded husband
 - d) life as a mother
8. The appropriate sub heading to para – 4 is
 - a) Mrs. Roosevelt as a devoted wife
 - b) Mrs. Roosevelt as a volunteer
 - c) Roosevelt political career
 - d) Roosevelt as a frustrated lady
9. The word scaffolding in para- 4 stands for _____
 - a) a wooden structure outside the building
 - b) invalidate
 - c) factories
 - d) mis – management
10. Roosevelt kept in touch with the American people through _____
 - a) My day
 - b) city life
 - c) my life
 - d) day life

II. Read the following passage carefully:

1) Frankness may be among the most overrated of virtues! And here's why. Because unrestricted and unfiltered frankness is a recipe for breaking relationships, even the closest ones. Such frankness is understandable, acceptable and even 'cute' only in children under the age of five.

2. Thinking before one speaks and using restraint are hallmarks of growing maturity and preparation for life. Learning to put a filter between thought and spoken word (and, even more importantly, written word) is an important life skill. Think is a popular acronym for True, Helpful, Inspiring, Necessary and Kind. This would do wonderfully well as a filter in our minds.

3. It is good to speak what's true, but only the other attributes in the acronym, particularly the last one, kindness. In the righteous glow of speaking what we see as the truth, we often forget to be kind. We blurt out 'truths' even when it is totally unhelpful and unnecessary to do so, let alone inspiring! Too often, such truth-telling is destructive rather than noble. Only those who do not care about the consequences can afford the luxury of 'speaking their minds' whenever and they please. When relationships are at stake, it is essential to choose the time, place, and words appropriately when imparting unpleasant truths. And even then, only when absolutely necessary and with the utmost kindness.

4. Speaking without forethought can be even more dangerous in other circumstances. For example, when someone has entrusted us with a secret. A sign of maturity is the ability to keep a secret. Very young children are incapable of understanding the concept of a secret. To them, every piece of information is interesting, new, and meant to be shared. As we grow older, we all learn how to keep a secret, but too often we keep only our own secrets and not those that others confide in us. We may blurt out something a friend told us in confidence, perhaps carelessly but often to appear important in other people's estimation. It gives us a sense of power to know something that our friends don't, and it requires conscious effort to keep the information to ourselves.

5. But this is the real test of an important life skill: self-restraint. Revealing a friend's secret is equivalent to betrayal of the friendship. Indeed, the consequences may well spread way beyond friendship alone. It may lead to gossip spreading like a forest fire, destroying peace of mind and even lives.

6. Words have the power to hurt or heal. They are not mere tools for tweeting and messaging. Before the tongue speaks, before the fingers fly over the keyboard, it is important to pause and apply the THINK acronym filter. Is this True, Helpful, Inspiring, Necessary, and Kind?

7. Of course, it is important to communicate. But it is far more important to be considerate and compassionate. Speaking well is a skill: speaking kindly is a life skill.

On the basis of your reading of the passage, answer the following questions:

a) Fill in the blanks in the given sentence:

_____ may be among the most overrated of _____

b) State whether the following statement is TRUE or FALSE.

Thinking before one speaks and using restraints are the hallmarks of growing maturity and preparation for life?

c) Choose the correct option to fill in the blanks in the given sentence

Learning to put a _____ between thought and spoken word is an important _____ skill.

1. refine 2. Filter 3. Life 4. Virtues 5. Acceptable

i) 1 and 2 ii) 2 and 3 iii) 3 and 4 iv) 4 and 5

d) What is your opinion is a popular acronym for true, helpful, inspiring, necessary and kind?

i) Think ii) Speak iii) Listen iv) Roam

e) Choose the correct option that suits the best in the passage?

i) Thinking would be wonderfully well as a filter in our mind

ii) Thinking always destroys the precious time

iii) In the materialistic glow of speaking what we see as truth are often forget to be kind

iv) A sign of immaturity is the ability to keep a secret

f) Choose the correct option that suit the best in the passage:

i) speaking kindly is not a life skill

ii) words have power to hurt or heal

iii) While growing older also, we all don't learn how to keep a secret

iv) Revealing a friend's secret is not equal to betrayal of the friendship

g) Which of the following lines does not acknowledge the passage?

i) Words are not mere tools for tweeting and messaging .

ii) It is important, to pause and apply the 'think' acronym filter

iii) It is never necessary to be considerate and compassionate

iv) Very young children are incapable of understanding the concept of secret

h) Which word from para – 2 is a synonym of 'adulthood'?

i) maturity ii) babyhood iii) infancy iv) youth

i) Which word from para – 3 is a synonym of 'avoidable'?

i) important ii) unnecessary iii) needed iv) obligatory

j) Which word from para 4 is the antonym of 'ultra safe'?

i) harmless ii) innocent iii) dangerous iv) innocuous

SECTION – B (Grammar)

(10marks)

B)1) Attempt any ten of the following questions:

i) _____ - by hunger, the elephant herd entered the sugarcane field.

a) drove b) driving c) driven d) drives

ii) Read the conversation between shyam and his mother complete the sentence by reporting shyam's reply correctly.

Mother : You seem so tired. Take some rest

Shyam: I can't think of relaxing as I have lot of work to do.

Mother said to shyam that he seemed so tired and advised him to take rest. Shyam replied that he could not think of relaxing as _____

iii) Select the correct option to complete the narration of the dialogue between a teacher and student:

Teacher: Why were you absent yesterday?

Manishka : I was not well

Teacher enquired Manishka why she had been absent the previous day. Manishka replied that _____

iv) Select the correct option to fill in the blank for the given line .

Sumit _____ when I called him yesterday evening .

a) slept b) was sleeping c) will sleep d) will have been sleeping

v) Select the option that identifies the error and supplies the correction for the following line. The interruption in the process of education of covid – 19. Pandemic will continue to have substantial effects

option error correction

a) of during

b) continue continues

c) in on

d) the a

vi) Interviewer asked Shyam about shooting in Kashmir. Report the interviewer's questions.

Is shooting in Kashmir challenging ?

vii) Fill in the blank by choosing the correct option, to complete the given sentence.

Arya, _____ mother go the best teacher award is my friend

a) who b) which c) whose d) whom

viii) Identify the error and supply the correction.

We have been waiting for Rajeev for more than a hour now.

Error Correction

ix) Select the correct option to complete the narration of the dialogue between Geetha and Ram.

Geetha : How did you spend your holidays?

Ram : I went for cricket coaching

Geetha enquired Ram how he had spent his holidays Ram replied that _____ for cricket coaching.

a) he has gone b) he had gone c) he went d) he gone

x) Fill in the blanks by choosing the correct options:

The dress suits her style . She _____ definitely like it!

a) can b) could c) will may

xi) Select the option the identifies the error and supplies the corrections for the following line.

A baboon troop comprise about forty members

Option error correction

a) a the

b) members member

c) comprise comprises

d) about around

xii) Fill in the blank by using the correct form of the word in the bracket, for the given portion of a letter.

Subject : Need for promoting Healthy Eating routines

Dear Sir

This is with reference to posters bearing the message of 'crash diet' being posted around our school premises . Such posters _____ (impact) the youngsters negatively and can be hazardous for their self – esteem.

SECTION – B (Creative Writing Skills))

(10marks)

IV. Attempt any **ONE** from A and B given below:

1.A) You are R. K. Gupta, the Head Librarian of A,B. Sr. Secondary School, Dibrugarh, Assam. Write a letter to M/s. Atma Ram & Sons, Guwahati, complaining about the poor quality of books supplied to your library.

(or)

B) Taking help from the information given below: write a letter to the Editor of a national daily, Expressing your concern at the nuisance caused by the stray cattle on the roads of your city. You are Vaibhav residing at 12 , Temple Road, Pune.

Information:

- Stray cattle on roads and in lanes
- Squat in the middle causing chaos
- Traffic jams and accident
- Government must take immediate steps

2. Attempt any **ONE** from A and B given below:

A. Read the following excerpt from an article that appeared in the magazine section of a local daily:

The ban single-use plastic is impractical. The purpose of articles like bags and packaging is ultimately to make human life easier. Plastic articles do this well, so they shouldn't be banned. Write a paragraph to analyse the given argument. You could think about what alternative explanations might weaken the given conclusion and include rationale / evidence that would strengthen / counter the given argument.

(or)

B) The BDO of the Kanpur region conducted a survey in the government and private schools and Kendriya Vidyalayas (KV) to see the preferred language. Students of classes 10, 11, 12 were a part of the survey

The following experts was taken from the analysis report that appeared in a local daily newspaper.

“It is quite clear from the data collected that in government schools English language is not spoken by them at all.

Only a few students are speaking English in Government schools and Hindi is spoken by maximum number of students. In private schools English is spoken by maximum number of students. Only few students speak Hindi as compared to government schools. In Kendriya Vidyalayas, there are approximately equal speakers of English and Hindi”

Write a paragraph to analyse the gives argument you could think about what alternative explanations might weaken the given conclusion and include rationale / evidence that would strengthen / counter the given argument making comparison wherever necessary.

SECTION – C (LITERATURE)

40Marks)

V. Reference to the context:

1. Attempt any ONE of the extracts given :

(5)

A) The house – the only one in the entire valley – sat on the crest of a low hill. From this height one could see the river and the fields of ripe corn dotted with the flowers that always promised a good harvest. The only thing the Earth needed was a downpour or at least a shower. Throughout the morning, Lencho, who knew his fields intimately-had done nothing else but see the sky towards the North - East.

“Now we’re really going to get some water, woman”

i) How did Lencho feel which looking at the sky? Lencho felt _____

ii) Choose the option that lists the set of statements that are NOT TRUE according to given extract:

- | | |
|--|--|
| i) Lencho knew his fields intimately | ii) Lencho was a lazy farmer |
| iii) Lencho grew corns in the fields | iv) Lencho was optimistic for the rainfall |
| v) Lencho lived with his wife and four daughters | vi) Lencho grew lomalies in his fields |
| vii) Lencho was a dedicated farmer | |

Options:

- | | | | |
|------------|------------|------------|------------|
| a) 1, 2, 4 | b) 1, 4, 7 | c) 2, 3, 5 | d) 2, 5, 6 |
|------------|------------|------------|------------|

iii) Pick the option that correctly classifies facts (f) and option (o) of the students below :

- | | |
|--|-------------------------------------|
| 1) I think Lencho is desperate about the rainfall | 2) Lencho was a hard working former |
| 3) Lencho should have grow another crop for better harvest | 4) Lencho had firm brief in God |
| a) F – 1, 2 and O – 4, 3 | b) F – 4, 3 and O – 2, 1 |
| c) F – 3, 2 and O – 4, 1 | d) F – 2, 4and O – 3, 1 |

iv) Which word does ‘intimately’ NOT correspond to ?

- | | | | |
|-------------|---------------|------------|-------------|
| a) friendly | b) antisocial | c) closely | d) familiar |
|-------------|---------------|------------|-------------|

v) Where was Lencho’s house situated?

(or)

B) I made up a bed for him in a warm loose box next to the one where the other dogs slept. For two days I kept an eye on him, giving him no food but plenty of water. At the end of the second day he started to show some interest in his surroundings and on the third he began to whimper when he heard the dogs in the yard.

When I opened the door, Tricki trotted out and was immediately engulfed by Joe, the greyhound, and his friends. After rolling him over and thoroughly inspecting him, the dogs moved off down the garden. Tricki followed them, rolling slightly with his surplus fat.

i) Tricki was engulfed by Joe and his friends . This means that Tricki was _____ by

ii) “rolling slightly with his surplus fat” . What does this mean with reference to Tricki?

- | | | | |
|----------------------|------------------------------|---------------------|--------------------|
| a) moving sluggishly | b) rolling over, not walking | c) moving playfully | d) moving in anger |
|----------------------|------------------------------|---------------------|--------------------|

iii) Choose the CORRECT Combination of who made a bed for whom?

- | | | | |
|--------------------------|---------------------------|------------------|-------------------|
| a) Mrs. Pumphery - staff | b) Mrs. Pumphery – Tricki | c) staff – James | d) James – Tricki |
|--------------------------|---------------------------|------------------|-------------------|

iv) The other dogs left Tricks alone choose the correct option:

- | | |
|--|--------------------------------------|
| a) Tricki did not respond to them in any way | b) Tricki did not want their company |
| c) Tricki chased them away | d) Tricki was annoyed at them |

v) Select the reason why the doctor gave Tricki no food and water for two days:

- | | |
|------------------------------|---------------------|
| a) To take a revenge for him | b) To punish him |
| c) To control his extra fat | d) To make him weak |

2. Attempt any one of two extracts given :

(5marks)

A) The way a crow
Shook down on me
The dust of snow
From a hemlock tree

i) State the correct rhyme scheme of the stanza.

ii) Which of the following options in 'hemlock tree' related to?

I) Negativity II) Positivity III) Spring season IV) Winter land V) Autumn reason

a) I and II b) II and V c) IV and V d) only I

iii) The 'Dust of snow' is referred to as _____

iv) Select the term that can NOT replace the term to 'shoot'.

a) rigid b) shake c) tremble d) shiver

v) Which of the following options is NOT related to the extract?

a) The crow shook the branch of the tree b) The snowflakes fell on the poet
c) The poet slipped on the fresh snowflakes d) It was a hemlock tree

(or)

B) But he's locked in a concrete cell,

His strength behind bars, Stalking the length of his cage,
Ignoring visitors.
He hears the last voice at night,
The patrolling cars,
And stares with his brilliant eyes
At the brilliant stars

i) The fact that the tiger is 'stalking the length of his cage' tells us that he is _____

ii) What is the rhyme scheme of the given stanzas?

iii) These stanzas bring out the contrast between

a) zoos and cities b) strength and weakness
c) freedom and captivity d) visitors and patrolling cars

iv) What is the caged tiger NOT likely to say to the visitors?

a) "Stop staring" b) "Set me free" c) "Join me" d) "Go away".

v) The tiger's 'brilliant eyes' reveal that he:-

a) hopes to be free and in the wild, someday b) is looked after well and is nourished and healthy
c) enjoys staring at the bright stars each night d) is well-rested and hence, wide-awake

VI) Answer any FOUR of the following in about 40 – 50 words each:

(4x3=12)

i) Who, according to Nelson Mandela, is a courageous man?

ii) Anne's creativity saved her from punishment. Explain

iii) The use of symbolism in the poem 'Fire and Ice' conveys the poet's message effectively. Expand with reference to the poem.

iv) Write the sum and substance of the poem, 'How to Tell wild Animals'.

v) Justify the poet's allusion to Rapunzel in 'Amanda'.

VII) Answer any TWO of the following

(2x3=6)

i) How was Ausable different from other secret agents? (The midnight visitor)

ii) Horace Danby was sure of his success at the Shotover Grange's robbery comment.

iii) How did 'Travel of monarch X' change Ebright's life.

VIII) Answer any ONE of the following in about 100 – 120 words:

(1x6=6)

i) Fear and lack of confidence stop one from learning new things. Do you agree? How did these two traits of the young seagull – make him coward? How did he overcome these shortcomings? (His First Flight – two stories about flying)

(or)

ii) In the chapter a "Baker From Goa" the narrator talks about his childhood in Goa and his found memories. Compare the childhood of "Nelson Mandela" with that of the narrator.

IX) Answer any ONE of the following:

(1x6=6)

i) Money can't make a man as much as education can. Elucidate the statement with reference to 'The Thief's Story'

(or)

ii) "The ones who creates chaos in society, dismantle the notion of quietude for their own vested interest, are indeed termed as lawless". Analyse the character of Griffin in the light of the statement given above.

General instructions:

- i) 15 minute prior reading allotted for question paper reading.
- ii) The question paper contains THREE sections – Reading, Grammar and Writing and Literature.
- iii) Attempt questions based on specific instructions for each part.

SECTION – A (Reading Skills)

I. Read the following passage carefully: (10x1=10)
Give me your tired, your poor, your huddled masses yearning to breathe free.

These are the words inscribed on the Statue of Liberty in New York. But ironically, those who go there are not the poor and the wretched but the skilled and the highly qualified doctors, engineers, scientists, nurses and technicians, from other countries including India.

The urge to go to the West has become compelling in India in post-independence years. Both the world wars and political upheavals like civil wars and revolutions, spawned large migrations during the first half of this century. The migrations in the latter half stemmed from economic motivation. People in power like scientists and skilled persons have, from the very beginning, played a key role in international migration. The conscious policy to encourage migration of high quality manpower from other regions and countries is related to the positive contribution made by the immigrants to their country of adoption, resulting in a net advantage to it.

The earnings and remittances from the Indians settled abroad or their eventual return, are poor compensation for the lasting and serious loss inflicted by their outflow. The specific objectives of the anti-brain drain policies, within the framework of independent development, are to bring back to a limited extent, the lost talents and skills from abroad and reduce the outflow in the short run and finally end it, except that necessitated by genuine, multi-lateral international dependence.

Brain Drain means professionals going abroad to work. This is not good because nowadays all the good brains are going out to work for other countries. If they had efficiently utilised their brains in this country, India could have been a better country. America has become a developed country, because these maximum number of employees consists of Indians only. So if those employees had worked for India, India would surely have become America. So Brain Drain is not good from an economic point of view.

Based on your understanding of the passage, answer the questions given below: (1x10=10)

1. What kind of people do not go to America?
2. Who have played a key role in international migration?
a) Skilled persons b) Scientists c) Engineers d) all of the these
3. Which one of the following is NOT an objective of anti-brain drain policies?
a) to bring back lost talent b) to help the poor
c) to reduce the outflow in the short run d) both (a) and (c)
4. America has become a developed country because _____
a) many Indians are migrating to America b) anti-drain policies are not working properly
c) maximum number of employees in America consists of Indians d) none of these
5. People started going to the west in _____
6. Choose the option that correctly states the terminology used for the 'professional going abroad to work'
a) political upheaval b) brain-drain c) anti- brain drain d) revolution
7. What is meant by the word 'inscribed'? para - 1
8. Find a word from the passage which means 'great changes or disturbance'. Para - 2
a) wars b) immigrants c) migration d) upheavals
9. Find the word opposite in meaning to 'earnings'. Para - 3
a) expenses b) compensation c) policies d) skills
10. Select the option that makes the opposite use of 'minimum' as used in the passage.
a) developer b) economic c) maximum d) drain

II. Read the passage given below:

Around 194 millions birds and 29 million mammals are thought to be killed every year on European roads, according to a new study that has ranked the most vulnerable species. The research has found that the species killed most often were not necessarily the endangered species. This means action to preserve wildlife when new roads are built risks being targeted at the wrong species based on current methods. Road densities in Europe are among the world's highest, with 50% of the continent within 1.5 km of a paved road or railway. Roads are therefore a significant threat to wildlife, and evidence shows deaths on them could even cause some species to disappear completely.

Despite this, the long-term protection of species is not currently considered when assessing the impact of new roads on wildlife, meaning we risk giving support to only the endangered species, doing nothing to help those most at risk. A better understanding of which species are most vulnerable to roads is therefore important if we are to take a more effective action of protection.

A research team based in Lisbon calculated road-kill rates for 423 bird species and 212 mammal species. They found that small animals with high population densities and which mature at an early age were the most likely to be killed on roads. Nocturnal mammals and birds with a diet of plants and seeds were also shown to have higher death rates.

The study also used the road-kill surveys to rank the bird and mammal species whose long-term survival was most threatened by road-kill. The hazel grouse and ground squirrel were found to be the most at risk of local extinction. Both are common in Europe but are classified as species of Least Concern Red list of Threatened Species.

The most vulnerable animals classified as threatened by International Union Conservation of Nature (IUCN) were the red-knobbed coot, Balcan mole and Podolian mole. The study revealed that road-kill hotspots were not the areas with the highest population of endangered species.

For example, house sparrows had a high road-kill rate (2.7 per km/year) but were ranked 420th of 423 bird species for vulnerability. Conversely, the hazel grouse had a low predicted road kill-rate (0.2 per km/yr) but was the most vulnerable of all birds studied.

Based on your understanding of the passage, answer the questions given below: (1x10=10)

- i) Study the following statements :
 1. Roads are killers for animals.
 2. Both birds and mammals are killed on roads.
 3. Species most killed are necessarily the endangered ones.
 - a) (1) is correct and (2) is false
 - b) (2) is correct and (3) is false
 - c) both (1) and (2) are correct
 - d) (3) is correct and (1) is false
- ii) Study the following statements :
 - 1) Roads have covered 50% of land in Europe.
 - 2) Road traffic causes a great risk to wild life.
 - 3) Some species can survive all kinds of traffic on roads.
 - a) (1) is correct and (2) is false
 - b) (2) is correct and (3) is false
 - c) (3) is correct and (1) is false
 - d) both (1) and (2) both are false
- iii) Which of the following points clearly depicts the message of the given paragraph?
 - a) While planning roads we should see which species to protect.
 - b) We are doing a lot to protect those are the most at risk
 - c) 50% of Europe is covered only with roads.
 - d) Small animals even with low population density are most at risk.
- iv) Which of the following given points is the correct statement?
 - a) More mammals than birds are killed on the roads.
 - b) Small animals generally keep away from roads.
 - c) Number of road-kills depends upon the population density of small animals.
 - d) Animals that come out only at night are saved.
- v)
 1. The surveys ranked the road-kill rate of birds and mammals.
 2. The finding puts grouse and squirrel at great risk.
 - a) (1) is an assertion and (2) is the response.
 - b) (2) is an assertion and (1) is the response
 - c) Both (1) and (2) are false.
 - d) Both (1) and (2) are unrelated to each other
- vi) Hazel grouse and ground squirrel are classified as species of least concern. The statement is :
 - a) a logical conclusion
 - b) a piece of good news
 - c) ironical
 - d) a pleasant surprise
- vii) The title of the study should be
 - a) A Birds and Mammals survey
 - b) Road-kills
 - c) Road density in Europe
 - d) Need for conservation
- viii) The purpose of the study is
 - a) how to prevent road-kills
 - b) to see who is more at risk on the roads
 - c) how to plan better roads
 - d) to estimate the number of road accident victims
- ix) 'A place of significant activity' is called _____ para – 4
- x) Synonym of 'Vulnerable' is _____
 - a) protected
 - b) safe
 - c) unprotected
 - d) homeless

SECTION – B (Grammar)

(10marks)

III) Attempt **any Ten** of the following questions:

- i) Fill in the blank by choosing option to complete the given sentence about Ajanta and Ellora caves
The caves of Ajanta and Ellora are the magnificent works of sculpture. Whoever goes there _____ spell bound.
 - a) becomes
 - b) become
 - c) becoming
 - d) has
- ii) Read the conversation between Ranbir and policeman
Complete the sentence by reporting the patient's reply correctly.
 Ranbir: Where is my car? I remember parking it here
 Policeman: The car has been towed away as you parked it in the 'no parking zone'.

Ranbir asked the policeman standing there where his car was and added that he remembered parking it there.

The policeman replied that the car _____ parked it in the ‘no parking zone’.

iii) Select the option that identifies the error and supplies the correction for the following line, from a news report.

It is perfectly natural for us to use, e.g., a dictionary we came across an unfamiliar word.

Option	Error	Correction
A)	for	of
B)	a	an
C)	we	us
D)	came	come

iv) Complete the given narrative, by filling in the blank with the correct option:

I met a smart young person ____ wanted a ‘Selfie’ with me. So, we sat on top of a boundary wall.

- a) which b) who c) whose d) whom

v) Identify the error in the given sentence, about the importance of physical exercise and supply the correction.

The modern student understands the importance of physical exercise, He spend one or two hours daily in the open air where he takes part on exercises which work wonders for his health.

Use the format for your response.

Error	Correction

vi) Shubham shared some information with Leela, about his homework. Report Leela’s question.

Have you completed your homework?

vii) _____ by hunger, the elephant herd entered the sugarcane field.

- a) Drove b) Driving c) Driven d) Drives

viii) Select the correct option to complete the narration of the dialogue between a father and son.

Father: Where are you going?

Son: I am going to the library.

Father asked his son where he was going. The son replied _____ to the library

- a) that he was going b) that he is going
c) that he was been going d) that he had been going

ix) What do you like the ____ about your school?

- a) best b) good c) better d) bad

x) Select the option that identifies the error and supplies the correction for the following line, from a news report:

The Chief Minister of Gujarat met the students of SRCC on 6th February in Delhi. He deliver a lecture on the global role of Gujarat economy.

Option	Error	Correction
A)	on	in
B)	deliver	delivered
C)	lecture	lectures
D)	role	roll

xi) Your class makes _____

- a) a lot of noises b) a lot of noisy c) lot of noisy d) a lot of noise

xii) Identify the error in the given sentence, from a science magazine report and supply the correction.

In 1868 a British scientist name Sir Norman Lockyer was studying the sun with an instrument called the spectroscope.

Use given format for your response

Error	Correction

SECTION – B (Creative Writing kills)

(10marks)

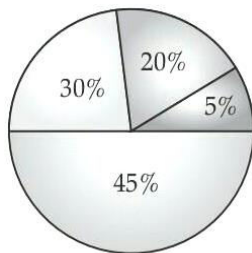
1. Attempt any ONE from (A) and (B) given below: (5marks)
- A. You noticed, while travelling in the Metro that in despite of the strict vigilance, people try to deface the Metro trains and stations. Write a letter to the editor of an evening newspaper suggesting DMRC, Delhi to start some awareness programmes at the school level in coordination with the Directorate of Education explaining how such programmes may help in bringing a positive change in people's attitude. You are Sudheer/Sweetie of 3B, DDA Flats, Punjabi Bagh, Delhi.
- (or)
- B. A)You are Mahima/ Mahim of 37, Raj Nagar ,Jaipur. You have to write a business letter complaining about the washing machine that was bought one month ago from that was bought one month age from Bharat Sale, Ashok Vihar, Jaipur. It has developed certain problems regarding its functioning write a letter complaint to the manager asking him for an immediate repair / replacement of the same.

2. Attempt any ONE from (A) and (B) given below: (5marks)

A) Write a paragraph to analyse the given argument.

You could think about what alternative explanations might weaken the given conclusion and include rationale / evidence that would strengthen / counter the given argument. Making comparison wherever necessary in 100- 120 words

B. A survey was conducted on a town where the views of people on cigarette smoking were collected. Given below is a pie chart showing the results of the survey. Write a paragraph interpreting the data



5% No restrictions
20% All public places
30% should be banned at shopping malls
45% blanket ban

SECTION – C (Literature)

(40 marks)

V) Reference to the context:

(10marks)

1. Attempt any ONE of TWO extracts given :

(5marks)

A) "Grandma died in January 1942. No one knows how often I think of her and still love her. The birthday celebration in 1942 was intended to make up for the other, and grandma's candle was lit along with the rest.

The four of us are still doing well and that brings me to the present date of 20 June 1942 and the solemn dedication of my diary

i) 'Grandma died in January 1942'. How did Grandma die?

- a) out of ill health b) out of age c) out of accident d) out of murder

ii) The phrase " This birthday celebration in 1942 was intended to make up for the other" means that:

- a) Anne wasn't in the city on her previous birthday
b) Anne was not allowed to have a party at her previous birthday
c) Anne's grandmother was' ill so she didn't celebrate her birthday that year
d) Anne had no mood to celebrate her birthday that year.

iii) Who are 'The four of us' in the extract?

- a) Anne, her parents, her brother b) Anne, her parents, her sister
c) Anne, her parents, her grandma d) Anne, her parents, her diary

iv) Which word is NOT similar in the term 'Solemn'?

- a) Ceremonial b) Serious c) sincere d) light – hearted

v) Which word DOES NOT relate to the term 'lit'?

- a) candle b) bulb c) engine d) matchstick
(or)

B) "Ausable did not fit any description of a secret agent Fowler had ever read."

Following him down the musty corridor of the gloomy French hotel where Ausable had a room, Fowler felt let down. It was a small room, on the sixth and top floor, and scarcely a setting for a romantic adventure. Ausable was, for one thing, fat. Very fat. And then there was his accent. Though he spoke French and German passably, he had never altogether lost the American accent he had brought to Paris from Boston twenty years ago. "You are disappointed," Ausable said wheezily over his shoulder.

i. "Following him down the musty corridor of the gloomy French hotel where Ausable had a room...

" Choose the correct option to replace the underlined words.

- a) expansive, abnormal b) lighted; formal c) damp; dingy d) uncanny; smart

ii. Amy is an American woman who teaches French and German in a primary school. This means that Amy is

- a) an empathetic teacher. b) a rational human being.
c) an experienced guide. d) a multilingual instructor.

iii. It can be inferred from the extract that a secret agent is expected to be:

- 1) fit. 2) compassionate. 3) apologetic. 4) suave. 5) violent.
a) Option 1, 3 & 5 b) Option 1 & 4 c) Option 2, 4 & 5 d) Option 2 & 3

iv. The reason Fowler was disappointed by Ausable when he met him was because Ausable

- a) lived in a shady French hotel. b) was related to the cops.
c) didn't have the personality of a spy. d) had a very strange accent.

v. Choose the option that lists the INCORRECT statements about the given passage.

1. Fowler had no expectations at all from Ausable.
2. Fowler was elated when he met Ausable.
3. Ausable was living in France as a spy.
4. Ausable had acquired the French accent over twenty years ago.
a) 1, 2 b) 3, 4 c) 1, 3 d) 2, 4

2. Attempt ANY ONE of two extracts given:

(2marks)

A. " The way a crow
Shook down on me
The dust of snow
From a hemlock tree

(Dust of Snow)

- i) State the CORRECT rhyme scheme of the stanza.
- ii) Which of the following options is “hemlock tree” related to ?
- | | | | | |
|------------------|-----------------|--------------------|-----------------|------------------|
| i) negativity | ii) positivity | iii) spring season | iv) winter land | v) autumn season |
| a) (i) and (iii) | b) (ii) and (v) | c) (iv) and (v) | d) only (i) | |

- iii) The “Dust of Snow” is referred to as _____
- iv) Select the term that can NOT replace the term to ‘shook’.
- | | | | |
|----------|----------|------------|-----------|
| a) rigid | b) shake | c) tremble | d) shiver |
|----------|----------|------------|-----------|
- v) Which of the following option is NOT related to the extract?
- | | |
|---|-------------------------------------|
| a) The crow shook the branch of the tree | b) The Snow flakes fell on the past |
| c) The poet slipped on the fresh snowflakes | d) It was a hemlock tree. |

(or)

- B. “There is a languid, emerald sea,
Where the sole inhabitant is me –
a mermaid, drifting blissfully.
- i) The word ‘emerald’ in the extract refers to _____
- ii) The poet uses brackets to convey that:
- | | |
|---|------------------------------------|
| a) he wants to stress upon the idea | b) there are Amanda’s thoughts |
| c) the girl’s deepest wish is conveyed here | d) this is the message of the poem |
- iii) Which word ‘languid’ DOES NOT have a meaning similar to ?
- | | | | |
|---------|-----------|------------|--------------|
| a) slow | b) active | c) relaxed | d) unhurried |
|---------|-----------|------------|--------------|
- iv) In the line, ‘ a mermaid, drifting blissfully’. Amanda’s desire to be alone is due to her mother’s constant nagging. (True / false)
- v) The word that DOES NOT indicate, a physical manifestation of sorrow in Amanda, is:
- | | | | |
|-----------|---------------|--------------|------------|
| a) lonely | b) blissfully | c) terrified | d) worried |
|-----------|---------------|--------------|------------|

VI) Answer ANY FOUR questions in 40 – 50 words each: (12 marks)

- i) All the citizens of South Africa were not able to perform their twin obligations, according to Mandela. Justify.
- ii) What risk did the narrator take while flying? Why? Describe his feelings.
- iii) Why was the Baker’s furnace essential in a traditional Goan village?
- iv) What do ‘fire’ and ‘ice’ stand for and what is the general opinion regarding the world?
- v) How can you identify the Asian Lion and the Bengal Tiger?

VII) Answer ANY TWO of the following in about 40 – 50 words each: (6 marks)

- i) What made Hari Singh come back to Anil?
- ii) What great qualities made Ausable a successful secret agent?
- iii) How did the invisible man first become visible?

VIII) Answer ANY ONE of the following in about 100 - 120 words each: (6 marks)

- i) Tiger in the poem ‘A Tiger in the zoo’ presents a contrasting image with the tiger in the poem ‘How to Tell Wild Animals’. Compare and contrast the two tigers with reference to the manner in which they have been presented in both poems.
- (or)
- ii) Describe Lencho’s qualities in light of his faith in God. Do you have faith in God like Lencho? Was Lencho’s reaction towards post office employees right?

IX) Answer ANY ONE of the following in about 100 - 120 words each: (6 marks)

- i) Excess of anything is harmful. Evaluate this in the context of Tricki’s conduction in the story ‘A Triumph of Surgery’.
- (or)
- ii) Ebright had nothing really to do in his hometown Reading when he was young. His mother kept him busy with new books and equipment.

Imagine yourself as a writer of the story ‘The making of a scientist’ and develop a conversation between Ebright and his mother when Ebright gets bored.

General instructions:

- i) 15 minute prior reading allotted for question paper reading.
- ii) The question paper contains THREE sections – Reading, Grammar and Writing and Literature.
- iii) Attempt questions based on specific instructions for each part.

SECTION – A (Reading Skills)

I. Read the following passage carefully:

- 1) Keep your watch accurate. For some people, moving up the time on their watch will help them get up earlier. For others, they will remember that the time on the watch is wrong and will disregard it altogether. It may be helpful to set your watch just two minutes ahead instead of five or ten.
- 2) Keep a clock, phone, computer or anything that displays time in each room of your house. One of the easiest ways to run late is simply by not realising that the time is passing as quickly as it is.
- 3) Set all your clocks and watches to the same time. Don't be an optimist. Things usually take Longer than what you'd expect, even without major delays. If you have a dinner appointment at 7:30 p.m., don't think you can work till 7 p.m., then take a bath, dress and reach on time. Realistically, calculate the time you will take at each step and then add 10 minutes more to allow for unexpected delays, or you cannot get to your job done in time.
- 4) Wake up when you are supposed to wake up. Don't hit the snooze button, keep on lying in bed, and watch TV at the very start of your day. May be you can try even setting your clock 10 minutes earlier than you need. If you have difficulty with this, move your alarm clock to somewhere away from your bed; the way, you will have to get up to turn it off. Commit yourself to being 15 minutes early for everything. If you have to reach your place of work at 8:00, don't even tell yourself this. Just tell yourself (and everyone else who listens— but don't annoy them or make them think that they are late or early!) "I have to be at work at 7:45." If you do this, you will be on time even with little unforeseen delays. You will be on time even with a traffic jam.

On the basis of your understanding of the passage, answer the questions given below: (10x1=10)

- i) The narrator does not deny which of the following activity just after waking up:
 - a) hitting snooze button b) keep on lying in bed c) watch TV d) wake up when you actually have to
- ii) It is good to commit yourself for everything.
 - a) to be late b) to delay c) being 15 minutes early d) to search the last moment
- iii) The passage highlights:
 - a) the value of time b) the importance of being ahead of time
 - c) the value of being upto time d) the value of calculating time
- iv) To be punctual we should
 - a) hit the snooze button of the alarm clock b) get up at the right time
 - c) start watching TV in the morning d) keep on lying in bed
- v) What does the author mean when he uses the word "delay"?
 - a) Late b) Turn off c) Disregard d) Accurate
- vi) What does " a person who is hopeful and confident " mean? (para – 3)
- vii) One of the major reasons for being delayed is
 - a) absence of clock, phone or computer bi) being overindulged in work
 - c) not realising that time passes quickly d) not keeping a margin in the expected time of work
- viii) Being ahead by minutes should be everyone's commitment.
 - a) 10 minutes b) 15 minutes c) 5 minutes d) 30 minutes
- ix) The author uses the word 'unexpected' in paragraph 4. He means to say:
 - a) commit bi) unforeseen ci) annoy d) snooze
- x) Which word conveys the opposite of realistically?
 - a) Impracticable b) Rational c) Achievable d) Pragmatic

II. Read the passage given below and answer the questions. Complete the statements that follow by choosing the most appropriate options out of the given ones:

(10 marks)

1. A group of youths from Peddapuram town in Andhra Pradesh's East Godavari district launched a social media group called 'Mana Peddapuram' (Our Peddapuram), a few years ago. The idea was to discuss Issues affecting the town and act upon them. A few months ago, Naresh Pedireddi, who has been behind the group came up with the concept of 'rice-for-plastic'. The idea behind the exchange was to encourage people to part with their non-biodegradable waste in large numbers. "The slogan we promoted was 'AVOID PLASTIC-AVOID HUNGER'. We wanted to get rid of plastic and also feed the hungry," says Pedireddi, a Peddapuram-based entrepreneur.

2. The programme was launched on Mahatma Gandhi's 150th birth anniversary on 2 October. Within days, the group was able to collect around 400 kgs of plastic and an equal amount of rice and other materials were distributed during the drive. Now they plan to do it every Sunday.

3. The plastic that was collected was deposited at the local municipality office. They promised that it will be recycled,” says Pedireddi.
4. For a town of around 70,000 people, the amount of plastic they collected through these drives is just a drop in the ocean. But the group says that they will continue to raise awareness among the residents of the town.
5. “The most satisfying thing about this drive has been that it has inspired people in other towns of the district to launch such initiatives,” says Pedireddi.
6. The Mana Peddapuram, besides raising civic issues like cleanliness, deforestation, and cultural events, has also run campaigns spreading awareness on blood donation and the pledging of organs.
7. The group claims that funds are not a problem as the people in Peddapuram are generous when it comes to donating money for worthy causes.
8. “We have hundreds of young people in this group and we hope to take up many more issues in the coming months and years,” says Pedireddi. We can only hope for many more such enthusiastic youth organizations that work for nation-building.

- V.KUMARA SWAMY

Based on your understanding of the passage answer the following questions by choosing the correct option:

- The social media group called ‘Mane Peddapuram’ was launched for_____
 - commercial purposes
 - keeping In contact with friends and relatives
 - creating a platform to discuss social issues
 - gaining popularity
- The idea behind the concept of ‘rice-for-plastic’ was _____
 - helping the hungry people
 - collecting plastic to be sold at higher price
 - helping the farmers
 - managing non-biodegradable waste
- The plastic collected was deposited with the local municipal committee so that they could _____
 - send it for recycling
 - sell it to the junk dealer
 - identify people using non-biodegradable material
 - give award to Naresh Pedireddi
- ‘a drop in the ocean’ means _____
 - very large
 - too little
 - in liquid state
 - quite important
- In the slogan ‘AVOID PLASTIC, AVOID HUNGER’, how could the hunger be avoided?
 - by keeping busy in social services
 - by selling the non-biodegradable waste
 - by distribution of rice
 - all the above
- _____rice and other materials were distributed during the drive. (para 2). Which of the following sentences uses the word ‘drive’ similar in meaning to the one given in the above sentence?
 - Mr. Gupta’s son drives his car very sensibly.
 - Too much cruelty to the workers can drive them to go on a strike.
 - The supermarket is only a five minutes’ drive away.
 - Our school launched a drive to collect funds for the orphan children.
- Which of the following is the best suitable title for this passage?
 - Rice for Plastic
 - Mana Peddapuram
 - Important Civic Issues
 - Avoid Hunger
- Arrange the following events in chronological order :
 - the plastic is deposited at the municipality for recycling.
 - 400 kg of plastic is collected.
 - social media group called ‘Mana Peddapuram’ is launched.
 - equal amount of rice and other material is distributed.
 - people from other areas also get inspired.
 - III, II, I, V, IV
 - III, II, IV, I , V
 - IV, II,I,III, V
 - V, II, I, IV, III
- Which of the following cannot be called a donation?

A) I will sell food	B) I will donate money	C) I will donate blood	D) I will donate my organs
---------------------	------------------------	------------------------	----------------------------
- Which of the following is the antonym of ‘generous’?
 - cunning
 - wicked
 - cruel
 - selfish

SECTION – B (Grammar)

(10marks)

III. ATTEMPT ANY TEN

- i) Fill in the blanks by choosing the correct option to complete the given sentence about the Wangala Festival of Maghalaya

The Wangala _____ festival for the Garo in Meghalaya, Assam and Nagaland. It is a post - harvest festival celebrated to mark the end of the agricultural year. It is popularly known as ‘Hundred Drums’ festival.

- A) is important B) are an important C) was the important D) is an important

- ii) Read the conversation between Rohit and Shruthi Complete the sentence correctly

Rohit : I am surprised to see you here in Delhi . When did you come?

Shruthi : I am here yesterday. I have been offered a job here

Rohit was surprised to see Shruthi in Delhi and asked when she had come. Shruthi replied that _____ and added _____

iii) Complete the given narrative, by filling in the blank with the correct option:

Seema was angry as she couldn't enjoy the fashion monthly issue digitally. So, her mom surprised her with a physical book. She knew that Seema was familiar with the digital version, so she went to the store and got it for her. Seema was _____

- (a) shocked (b) elated (c) angry (d) sad

iv) Identify the error in the given sentence and supply the correction:

The students are fighting for the flower or fruits that they plucked . Use the given format

Error	Correction
-------	------------

v) Fill in the blanks by choosing the correct option to complete the given sentence

Sir,
When _____ you be able to spare some time for it?

- a) should b) would c) could d) might

vi) Report the following statement:

the said to his maid, "Why are you so lazy today?"

vii) Identify the error in this sentence about paper and supply the correction:

Paper was first made by the Egyptians for the plant named 'papyrus'.

Use the given format for your response:

Error	Correction
-------	------------

viii) Fill in the blank by choosing the correct option to complete this information about 'Swimming pool functioning time'.

The swimming pool _____ at 9 o' clock and _____ at 18.30 hours everyday.

- a) is opening / is closing b) opens / closes c) has opened / has closed d) opened / closed

ix) Select the correct option to complete the dialogue between Priya and Smitha

Priya: Hey Smitha! Are you free this weekend?

Smitha : Yes, _____

- A) I am busy this weekend B) I have no plans for the weekend
C) I have a meeting for the weekend D) Sorry, I have an appointment.

x) Lekha shared some information, with Rita, about his new film shooting in Coorg Report sate Rita's question

Is shooting challenging for you?

xi) What do you like the _____ about you school?

- A) best B) good C) better D) bad

xii) Complete the given narrative, by filling in the blank with the correct option.

I met a smart young person _____ wanted a 'selfi' with me. So we sad on top of a boundary wall.

- A) Which B) Who C) Whose D) Whom

SECTION – C (Literature)

V) Reference to the context (10marks)
1) Attempt ANY ONE of two extracts given : (5)

A) Paris was about 150 kilometres behind me when I saw the clouds. Storm clouds. They were huge. They looked like black mountains standing in front of me across the sky. I knew I could not fly up and over them, and I did not have enough fuel to fly around them to the north or south. "I ought to go back to Paris," I thought, but I wanted to get home. I wanted that breakfast. 'I'll take the risk,' I thought, and flew that old Dakota straight into the storm.

i) "I ought to go back to Paris," Why must the speaker go back to Paris?

- a) He couldn't go ahead due to storm b) His family holiday was cancelled
c) He wanted to take a shortcut d) He forgot an important thing to do at Paris

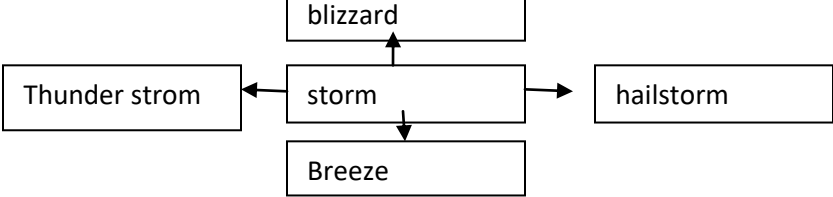
ii) "I wanted that breakfast," which breakfast in the speaking talking about?

- a) Breakfast with his friends in Paris b) The breakfast which he forgot to eat that day
c) Breakfast with his friends in England d) The English breakfast with his family

iii) Which word in the extract means the same as "enormous"?

- a) enough b) across c) huge d) behind

iv) The word that does NOT relate to the word 'storm' is



v) 'I'll take the risk'. What risk had the speaker taken?

- a) He landed the plane at wrong airport b) He flew into the storm
c) He landed the plane on the sea d) He returned to Paris
(or)

B) "You are disappointed", Ausable said wheezily over his shoulder. "You were told that I was a secret agent, a spy, dealing in espionage and danger. You wished to meet me because you are a writer, young and romantic. You envisioned mysterious figures in the night, the crack of pistols, drugs in the wine."

"Instead, you have spent a dull evening in a French music hall with a sloppy fat man who, instead of having messages slipped into his hand by dark-eyed beauties, gets only a prosaic telephone call making an appointment in his room.

- i) You are disappointed Ausable said wheezily over his shoulder why was fowler disappointed?
- a) Ausable's was rude
 - b) Ausable's personality didn't match a secret agent
 - c) Ausable's schedule was so tight
 - d) Ausable didn't permit fowler to write about him

ii) Ausable dealt in espionage and danger? What is 'espionage'?

- a) an act of spying
- b) a murder
- c) terrorism
- d) criminal activity

iii) Fowler was a young

- a) spy
- b) policeman
- c) trainee
- d) writer

iv) Pick the INCORRECT statement

- a) Fowler spent a dull evening in a French music hall with Ausable
- b) Ausable was a sloppy fat man
- c) Ausable got messages slipped into his hand by dark – eyed beauties
- d) Fowler had been bored

v) Which word does not relate to the term 'chuckled'?

- a) laughed
- b) screamed
- c) tittered
- d) giggled

2) Attempt ANY ONE of two extracts given :

(5)

A) Some say the world will end in fire,
Some say in ice.
From what I've tasted of desire
I hold with those who favor fire.
But if it had to perish twice,
I think I know enough of hate
To say that for destruction ice
Is also great
And would suffice.

i) Choose the correct statement about the given poem.

- a) Fire and Ice are images they help the readers visualize the power of nature over man
- b) Fire and Ice are symbols – not of natural disasters, but of humanity's ability to create disasters of its own.
- c) Fire and Ice are elements – not of Nature but man – made and possess the ability to create havoc for mankind
- d) Fire and Ice are agents – they change the thinking of mankind from negative to positive and bring harmony

ii) What is fire symbolic of ?

- a) Love and new desires
- b) lust and endless desires
- c) love and beginning of new thing
- d) revolution

iii) The poem gives a _____ put across by the poet

- a) powerful warning
- b) heart – felt apology
- c) earnest appeal
- d) vengeful threat

iv) What does the poet want to convey through this poem?

- a) we should not be greedy
- b) All humans should check their desires and love fellow beings
- c) we should restrain our desires and love fellow beings
- d) both (a) and (c)

v) Who is the poet of this poem?

- a) R. L. Stevenson
 - b) Leslie Norris
 - c) William Wordsworth
 - d) Robert Frost
- (or)

B) He should be snarling around houses
At the jungle's edge,
Baring his white fangs, his claws,
Terrorising the village!
But he's locked in a concrete cell,
His strength behind bars,
Stalking the length of his cage,
Ignoring visitors.

i) Study the following statements:

- 1) The villagers don't feel happy that the tiger is caged
- 2) We feel sad that the tiger is caged
- 3) The tiger is happy that he does not have to hunt for his food

- a) (1) is right and (2) is wrong
- b) (2) is right and (1) is wrong
- c) (3) is right and (1) wrong
- d) (1) is wrong and (3) is right

ii) We should protect the tigers as :

- a) they are majestic to look at
- b) They attract visitors to the zoo
- c) They are ferocious
- d) They are part of our environment

iii) The tiger terrorizes the villagers as:

- a) by killing their cattle
- b) as he does not like to be hunted
- c) as they have cleared his habitat
- d) as he has got tired of being in the forest

- iv) "A tiger in the zoo ignoring visitors", is an example of
a) metaphor b) simile c) irony d) personification
- v) The tiger is reacting to his imprisonment in the zoo by
a) quietly walking in the cage b) showing his anger openly
c) stalking in the cage d) ignoring visitors

VI) Answer ANY FOUR of the following in about 40 – 50 words:

(4x3=12)

- a) Why did Lencho write a letter to god?
b) How has the poet observed 'nature' in the poem Dust of Snow?
c) What did freedom mean to Mandela in childhood?
d) How can you identify an Asian Lion and a Bengal Tiger?
e) How do you know that Goa's bakers are very prosperous?

VII) Answer ANY TWO of the following:

(2x3=6)

- a) Was Tricki suffering from any ailment in reality? If not, then what made him inactive and lethargic?
b) What made Hari Singh come back to Anil?
c) Why was Horace Danby sure that his robbery at Shotover Grange would be a successful one?

VIII) Answer ANY ONE of the following in about 100 – 120 words:

(1x6=6)

- a) What advice might "Chatterbox" Anne Frank has for the quietly imaginative Amanda?

Present this as a conversation between the two you may begin this way:

Anne: Gosh! You do run off into some strange worlds, don't you?

Amanda: (nods) Wellyou see

(or)

- b) "Coorg offers a variety of adventures as the district is rich in flora and fauna". What does coorg offer to the tourists? How can one reach coorg? Evaluate.

IX) Answer ANY ONE of the following in about 100 – 120 words:

(1x6=6)

- i) Read the text from the chapter given below and critically examine the characters on the basis of their sociability.

"Mrs Hall, the landlord's wife, made every effort to be friendly. But griffin had no desire to talk".

(or)

- ii) "Mother is the first teacher of a child" Evaluate the quote given above in the light of contribution of Richard E bright's mother in "making him" a scientist".

VII) Answer ANY TWO of the following:

(2x3=6)

- a) Was Tricki suffering from any ailment in reality? If not, then what made him inactive and lethargic?
b) What made Hari Singh come back to Anil?
c) Why was Horace Danby sure that his robbery at Shotover Grange would be a successful one?

VIII) Answer ANY ONE of the following in about 100 – 120 words:

(1x6=6)

- a) What advice might "Chatterbox" Anne Frank has for the quietly imaginative Amanda?

Present this as a conversation between the two you may begin this way:

Anne: Gosh! You do run off into some strange worlds, don't you?

Amanda: (nods) Wellyou see

(or)

- b) "Coorg offers a variety of adventures as the district is rich in flora and fauna". What does coorg offer to the tourists? How can one reach coorg? Evaluate.

IX) Answer ANY ONE of the following in about 100 – 120 words:

(1x6=6)

- i) Read the text from the chapter given below and critically examine the characters on the basis of their sociability.

"Mrs Hall, the landlord's wife, made every effort to be friendly. But griffin had no desire to talk".

(or)

- ii) "Mother is the first teacher of a child" Evaluate the quote given above in the light of contribution of Richard E bright's mother in "making him" a scientist".

VII) Answer ANY TWO of the following:

(2x3=6)

- a) Was Tricki suffering from any ailment in reality? If not, then what made him inactive and lethargic?
b) What made Hari Singh come back to Anil?
c) Why was Horace Danby sure that his robbery at Shotover Grange would be a successful one?

VIII) Answer ANY ONE of the following in about 100 – 120 words:

(1x6=6)

- a) What advice might "Chatterbox" Anne Frank has for the quietly imaginative Amanda?

Present this as a conversation between the two you may begin this way:

Anne: Gosh! You do run off into some strange worlds, don't you?

Amanda: (nods) Wellyou see

(or)

b) "Coorg offers a variety of adventures as the district is rich in flora and fauna". What does coorg offer to the tourists? How can one reach coorg? Evaluate.

IX) Answer ANY ONE of the following in about 100 – 120 words: (1x6=6)

i) Read the text from the chapter given below and critically examine the characters on the basis of their sociability.

"Mrs Hall, the landlord's wife, made every effort to be friendly. But griffin had no desire to talk".

(or)

ii) "Mother is the first teacher of a child" Evaluate the quote given above in the light of contribution of Richard E bright's mother in "making him" a scientist".

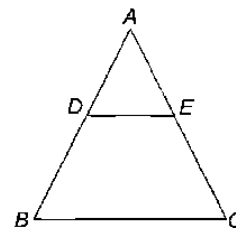
General Instructions:

- This Question Paper has 5 Sections A – E.
- Section A has 20 MCQs carrying 1 mark each
- Section B has 5 questions carrying 02 marks each.
- Section C has 6 questions carrying 03 marks each.
- Section D has 4 questions carrying 05 marks each.
- Section E has 3 case based integrated units of assessment (04 marks each) with sub – parts of the values of 1, 1 and 2 marks each respectively.
- All questions are compulsory. However, an internal choice in 2 questions of 5 marks, 2 questions of 3 marks and 2 questions of 2 marks has been provided. An internal choice has been provided in the 2 marks questions of Section E
- Draw neat figures wherever required. Take $\pi = \frac{22}{7}$ wherever required if not stated.

SECTION – A

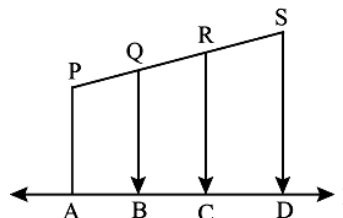
(1 X 20 = 20)

- What is the greatest possible speed at which a man can walk 52 km and 91 km in an exact number of minutes?
 (a) 17 m / min (b) 7 m / min (c) 13 m / min (d) 26 m / min
- The HCF and the LCM of 12, 21, 15 respectively are
 (a) 3, 140 (b) 12, 420 (c) 3, 420 (d) 420, 3
- The LCM of two numbers, is 2400. Which of the following cannot be their HCF?
 (a) 300 (b) 400 (c) 500 (d) 600
- HCF of $(2^3 \times 3^2 \times 5)$, $(2^2 \times 3^3 \times 5^2)$ and $(2^4 \times 5^3 \times 7)$ is
 (a) 30 (b) 48 (c) 20 (d) 105
- The pair of equations $2x - 3y = 1$ and $3x - 2y = 4$ has _____ solution.
 (a) one (b) two (c) no (d) many
- If $2x + 3y = 0$ and $4x - 3y = 0$ then $x + y =$
 (a) 0 (b) 1 (c) -1 (d) 2
- The equations $x - y = 0.9$ and $\frac{11}{x+y} = 2$ have the solutions
 (a) $x = 5, y = 9$ (b) $x = 3.2, y = 2.3$ (c) $x = 3, y = 2$ (d) None of these
- The value of C for which pair of linear equations $cx - y = 2$ and $6x - 2y = 4$ will have infinitely many solution is
 (a) 3 (b) -3 (c) -12 (d) no value
- The value(s) of k for which the Quadratic equation $2x^2 + Kx + 2 = 0$ has equal roots, is :
 (a) 4 (b) ± 4 (c) -4 (d) 0
- The positive root of $\sqrt{3x^2 + 6} = 3$ is :
 (a) 2 (b) 1 (c) 4 (d) 3
- The roots of the Quadratic equation $2x^2 - x - 6 = 0$ are :
 (a) $-2, \frac{3}{2}$ (b) $2, -\frac{3}{2}$ (c) $-2, -\frac{3}{2}$ (d) $2, \frac{3}{2}$
- In figure, $AD = 1.28$ cm, $DB = 2.56$ cm, $AE = 0.64$ cm, if $DE \parallel BC$, $EC =$ _____
 (a) 1.28 cm
 (b) 2.56 cm
 (c) 0.64 cm
 (d) 0.32 cm
- In $\triangle PQR$ & $\triangle MNS$, $\frac{PQ}{NS} = \frac{QR}{MS} = \frac{PR}{MN}$, then symbolically we write it as
 (a) $\triangle PQR \sim \triangle MNS$ (b) $\triangle PQR \sim \triangle SMP$ (c) $\triangle QRP \sim \triangle NSM$ (d) $\triangle QRP \sim \triangle SMN$



14. In the given figure, PA , QB , RC and SD are all perpendiculars to a line l . If $AB = 6\text{ cm}$, $BC = 9\text{ cm}$, $CD = 15\text{ cm}$ and $SP = 40\text{ cm}$, then $PQ =$

- (a) 6 cm (b) 30 cm
(c) 20 cm (d) 8 cm



15. If four vertices of a parallelogram taken in order are $(-3, -1)$, (a, b) , $(3, 3)$ and $(4, 3)$, then $a : b =$
(a) $1 : 4$ (b) $4 : 1$ (c) $1 : 2$ (d) $2 : 1$
16. If A and B are the points $(-3, 4)$ and $(2, 1)$ respectively, then the coordinates of the point on AB produced such that $AC = 2BC$ are
(a) $(2, 4)$ (b) $(3, 7)$ (c) $(7, -2)$ (d) none of these
17. Radius of circumcircle of a triangle ABC is $5\sqrt{10}$ units. If point P is equidistant from $A(1, 3)$, $B(-3, 5)$ and $C(5, -1)$ then $AP =$
(a) 5 units (b) $5\sqrt{5}$ units (c) 25 units (d) $5\sqrt{10}$ units
18. $AOBC$ is a rectangle whose three vertices are $A(0, 3)$, $O(0, 0)$ and $B(5, 0)$. The length of its diagonal is
(a) 5 units (b) 3 units (c) $\sqrt{34}$ units (d) 4 units

Direction : In the question number 19 and 20, a statement of Assertion (A) is followed by a statement of Reason (R). Choose the correct option.

19. Assertion (A) : Pair of linear equations : $9x + 3y + 12 = 0$; $8x + 6y + 24 = 0$ have infinitely many solutions

Reason (R) : Pair of linear equations : $a_1x + b_1y + c_1 = 0$ and $a_2x + b_2y + c_2 = 0$ have infinitely many solutions, if $\frac{a_1}{a_2} = \frac{b_1}{b_2} = \frac{c_1}{c_2}$

- (a) Both Assertion (A) and Reason (R) are true and Reason (R) is the correct explanation of Assertion (A)
(b) Both Assertion (A) and Reason (R) are true but Reason (R) is not the correct explanation of Assertion (A)
(c) Assertion (A) is true but Reason (R) is false
(d) Assertion (A) is false but Reason (R) is true

20. Assertion (A) : The point $(0, 6)$ lies on y - axis.

Reason (R) : The x - coordinate on the point on y - axis is zero

- (a) Both Assertion (A) and Reason (R) are true and Reason (R) is the correct explanation of Assertion (A)
(b) Both Assertion (A) and Reason (R) are true and Reason (R) is not the correct explanation of Assertion (A)
(c) Assertion (A) is true but Reason (R) is false
(d) Assertion (A) is false but Reason (R) is true

SECTION – B

(5 X 2 = 10)

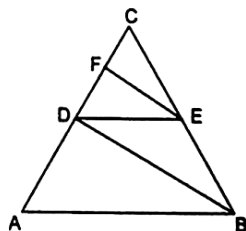
21. Find the number of solutions of the following pair of linear equations.

$$3x - 3y = 2$$

$$7x - 2y = 2$$

22. In figure $AB \parallel DE$ and $BD \parallel EF$.

Prove that $DC^2 = CF \times AC$



23. If the midpoint of the line segment joining the points $P(6, a - 2)$ and $Q(-2, 4)$ is $(2, -4)$, then find the value of a

(or)

The length of a line segment is 13 units and the coordinates of one end point are $(-6, 7)$. If the ordinate of the other end point is -1 , find the abscissa of the other end point.

24. If $49x + 51y = 499$; $51x + 49y = 501$ then find the value of x and y .

25. If the $HCF(210, 55)$ is expressible in the form $210 \times 5 - 55y$, then find y .

(or)

Can we have any $n \in \mathbb{N}$, where 7^n ends with the digit Zero?

SECTION – C

(6 X 3 = 18)

26. Solve for x and y : $\frac{15}{x+y} - \frac{2}{x-y} = 1$ and $\frac{15}{x+y} + \frac{7}{x-y} = 10$ ($x + y \neq 0$; $x - y \neq 0$)

27. Solve the following system of equations graphically

$$x + 2y = 4$$

$$4x + 3y = 10$$

(or)

determine by drawing graph, whether the following pair of linear equations has infinite number of solutions or not : $y = 5$ and $y + 3 = 0$

28. In a class, one third of students had gone to watch drama. Twice the square root of the students had gone to watch magic show and remaining 12 students had gone to watch football match. Find the total number of students in the class.

29. In the given figure, $\frac{QR}{QS} = \frac{QT}{PR}$ and $\angle PQR = \angle PRQ$.

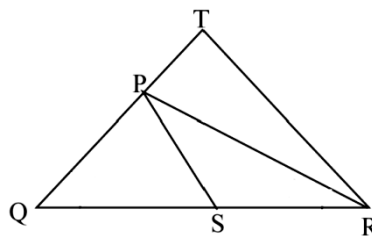
Prove that : $\Delta PQS \sim \Delta TQR$

(or)

In a ΔABC , $\angle ABC = 45^\circ$ prove that $(AC)^2 = (AB)^2 + (BC)^2 - 4 \text{ ar } (\Delta ABC)$

30. Find the Zeroes of $\sqrt{3}x^2 + 10x + 7\sqrt{3}$

31. Solve for x : $\frac{1}{a} + \frac{1}{b} + \frac{1}{x} = \frac{1}{a+b+x}$; $a \neq 0$; $b \neq 0$, $x \neq 0$



SECTION – D

(4 X 5 = 20)

32. At t minutes past 2 p.m the time needed by the minutes hand of a clock to show 3 p.m was found to be 3 minutes less than $\frac{t^2}{4}$ minutes. Find t .

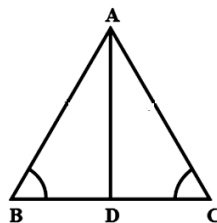
(or)

At present Asha's age (in years) is 2 more than the square of her daughter Nisha's age. When Nisha grows to her mother's present age, Asha's age would be one year less than 10 times the present age of Nisha. Find the present ages of both Asha and Nisha.

33. In ΔABC , $\frac{AB}{AC} = \frac{BD}{CD}$, $\angle B = 80^\circ$, $\angle C = 40^\circ$

Find $\angle CAD$

(or)



If AD and PM are medians of triangles ABC and PQR , respectively where $\Delta ABC \sim \Delta PQR$, prove that $\frac{AB}{PQ} = \frac{AD}{PM}$

34. Prove that if a line is drawn parallel to one side of a triangle to intersect the other two sides in distinct points, the other two sides are divided in the same ratio.

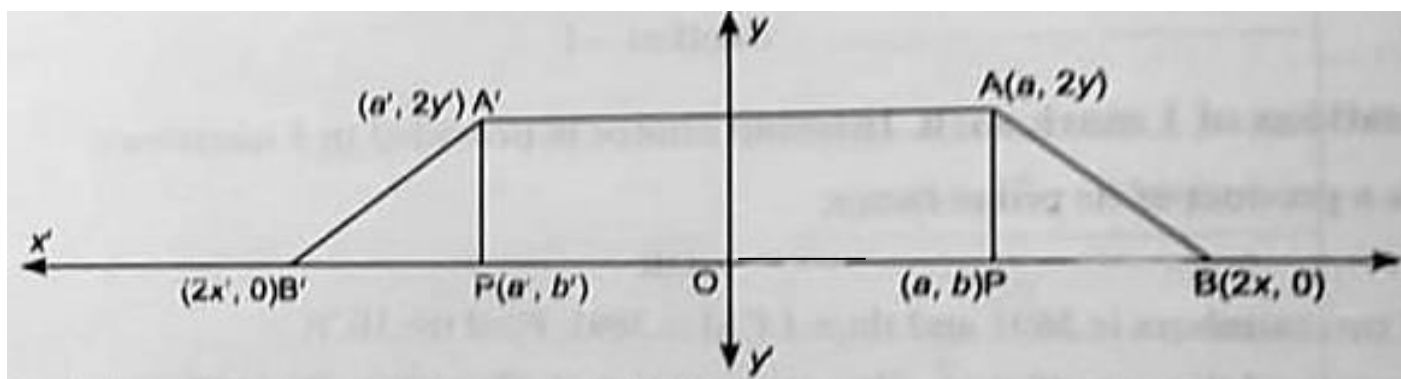
35. Determine graphically the coordinates of the vertices of a triangle formed by the equations $2x - 3y + 6 = 0$ and $2x + 3y - 18 = 0$; and the y axis. Also, find the area of this triangle.

SECTION – E

(3 X 4 = 12)

Case study based Questions are compulsory:

36. A floor designed is made by 2 – dimensional geometrical figures as shown on coordinate axis.



Coordinates of points are also represented. Here $A'P'B'$ is mirror image of APB along y axis.
 Answer the following Questions based on above diagram

- (i) Find the coordinates of mid point of PP'
- (ii) Find the distance of point P from y – axis
- (iii) Find the distance PP'
- (or)
- (iv) Find the distance AA'

37. Quadratic equations has many aspects in real life. Quadratic equations are very useful while calculating areas of a room, box, perimeter a plot of land etc. For example, Rajuvinder need to make a top of a study table whose length is 1.5 m longer than its breadth. He has various questions in his mind. Help him to answer the questions

- (i) If Rajuvinder has 3 m^2 of plywood. He used it to make a top of a study table whose length is 1.5 m longer than its breadth. Represent this situation in form of Quadratic equation.
- (ii) What are the dimensions of top of the study table?
- (iii) If Rajuvinder keeps the length and breadth of top of study table equal then what is the Quadratic equation representing this situation?
- (or)

What are the dimensions of square shape study table?

38. LOCATION OF HOUSES

The houses of four friends are located by point A, B, P and Q shown in figure



If coordinates of A and B with respect to coordinate axes are known and P and Q trisect the AB . Then answer the following questions based on it

- (i) find the coordinate of P
- (ii) find the coordinate of Q
- (iii) Find the distance PQ
- (or)
- Find the distance AB

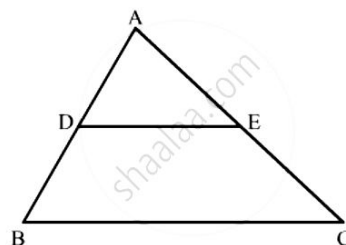
General Instructions:

- (i) This Question Paper has 5 Sections A – E.
- (ii) Section A has 20 MCQs carrying 1 mark each
- (iii) Section B has 5 questions carrying 02 marks each.
- (iv) Section C has 6 questions carrying 03 marks each.
- (v) Section D has 4 questions carrying 05 marks each.
- (vi) Section E has 3 case based integrated units of assessment (04 marks each) with sub – parts of the values of 1, 1 and 2 marks each respectively.
- (vii) All questions are compulsory. However, an internal choice in 2 questions of 5 marks, 2 questions of 3 marks and 2 questions of 2 marks has been provided. An internal choice has been provided in the 2 marks questions of Section E
- (viii) Draw neat figures wherever required.

SECTION – A

(1 X 20 = 20)

1. 108 can be expressed as the product of primes as
 (a) $2^3 \times 3^2$ (b) $2^3 \times 3^3$ (c) $2^2 \times 3^2$ (d) $2^2 \times 3^3$
2. If $HCF(26, 169) = 13$, then $LCM(26, 169) =$ equal to
 (a) 26 (b) 52 (c) 338 (d) 13
3. The decimal expansion of the rational number $\frac{14587}{2^1 \times 5^5}$ will terminate after
 (a) one decimal place (b) five decimal places
 (c) three decimal places (d) two decimal places
4. If the system of equations $3x + y = 1$ and $(2K - 1)x + (K - 1)y = 2k + 1$ is inconsistent, then the value of k is
 (a) 1 (b) 0 (c) -1 (d) 2
5. If $ABCD$ is a rectangle such that $AB = 12$; $BC = 8$; $CD = x + y$ and $DA = x - y$, then
 (a) $x = 10$; $y = 2$ (b) $x = 12$; $y = 8$ (c) $x = 2$; $y = 10$ (d) $x = 20$; $y = 0$
6. The discriminant of the Quadratic equation $(x + 2)^2 = 0$ is
 (a) -2 (b) 2 (c) 4 (d) 0
7. If one root of the quadratic equation $x^2 + ax + 3 = 0$ is 1, then its other root is
 (a) 3 (b) -3 (c) 2 (d) -2
8. If the equation $x^2 + 4x + K = 0$ has real and distinct roots, then
 (a) $K < 4$ (b) $K > 4$ (c) $K \geq 4$ (d) $K \leq 4$
9. The value of $\sqrt{6 + \sqrt{6 + \sqrt{6 + \dots}}}$ is
 (a) 4 (b) 3 (c) -2 (d) 3.5
10. If $y = 1$ is a common root of the equation $ay^2 + ay + 3 = 0$ and $y^2 + y + b = 0$, then ab equals to
 (a) 3 (b) $-\frac{7}{2}$ (c) 6 (d) -3
11. Find the value of x for which $DE \parallel BC$
 (a) 4 (b) 1 (c) 3 (d) 2



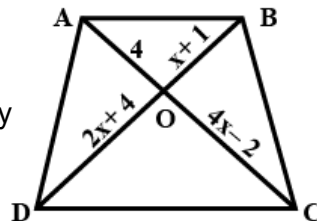
12. $ABCD$ is a trapezium such that $BC \parallel AD$ and $AB = 4$ cm. If the diagonals AC and BD intersect at O such that $\frac{AO}{OC} = \frac{DO}{OB} = \frac{1}{2}$, then $BC =$
 (a) 7 cm (b) 8 cm (c) 9 cm (d) 6 cm
13. In triangles ABC and DEF , $\angle A = \angle E = 40^\circ$, $AB : ED = AC : EF$ and $\angle F = 65^\circ$, then $\angle B =$
 (a) 35° (b) 65° (c) 75° (d) 85°
14. In $\triangle ABC$, $\angle B = 90^\circ$, $BD \perp AC$. If $AC = 9$ cm and $AD = 3$ cm, then $BD =$
 (a) $2\sqrt{2}$ (b) $3\sqrt{2}$ (c) $2\sqrt{3}$ (d) $3\sqrt{3}$
15. If $A(6, 1)$, $B(8, 2)$, $C(9, 4)$ and $D(x, 3)$ are the vertices of a parallelogram $ABCD$, then the value of x is
 (a) 4 (b) 7 (c) 6 (d) 5

16. The distance between the points $(a \cos \theta + b \sin \theta, 0)$ and $(0, a \sin \theta - b \cos \theta)$ is
 (a) $a^2 + b^2$ (b) $a + b$ (c) $a^2 - b^2$ (d) $\sqrt{a^2 + b^2}$
17. The distance of the point $(4, 7)$ from the x - axis is
 (a) 4 (b) 7 (c) 11 (d) $\sqrt{65}$
18. If the centroid of the triangle formed by $(7, x)$, $(y, -6)$ and $(9, 10)$ is at $(6, 3)$, then $(x, y) =$
 (a) $(4, 5)$ (b) $(5, 4)$ (c) $(-5, -2)$ (d) $(5, 2)$

Direction : In the question number 19 and 20 , a statement of Assertion (A) is followed by a statement of Reason (R). Choose the correct option.

- (a) Both Assertion (A) and Reason (R) are true and Reason (R) is the correct explanation of Assertion (A)
 (b) Both Assertion (A) and Reason (R) are true but Reason (R) is not the correct explanation of Assertion (A)
 (c) Assertion (A) is true but Reason (R) is false
 (d) Assertion (A) is false but Reason (R) is true

19. Assertion (A) : In the figure, if $AB \parallel CD$, then $x = 3$
 Reason (R) : Diagonals of a trapezium divide each other proportionally



20. Assertion (A) : If $LCM(60, 72) = 360$, then $HCF(60, 72) = 12$
 Reason (R) : $HCF(a, b) \times LCM(a, b) = a + b$

SECTION – B

(5 X 2 = 10)

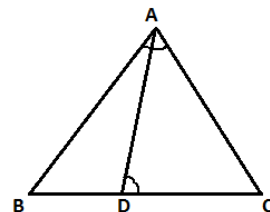
21. Determine the values of p and q so that the prime factorisation of 2520 is expressible as $2^3 \times 3^p \times q \times 7$.
 (or)

Prove that $2 + 5\sqrt{3}$ is an irrational number, given that $\sqrt{3}$ is an irrational number

22. Find the nature of the roots of the quadratic equation $2x^2 - 6x + 3 = 0$. Also, if real roots exist, find them.

23. If D is a point on the side BC of a triangle ABC such that

$BC = 12 \text{ cm}$, $BD = 9 \text{ cm}$ and $\angle BAC = \angle ADC$, then find the length of AC



24. Find the point on the x - axis which is equidistant from $(2, -5)$ and $(-2, 9)$
 (or)

Find the ratio in which the line segment joining the points $(-3, 10)$ and $(6, -8)$ is divided by $(-1, 6)$

25. Solve the pair of linear equations for x and y :
 $2(ax - by) + (a + 4b) = 0$
 $2(bx + ay) + (b - 4a) = 0$

SECTION – C

(6 X 3 = 18)

26. Show that $\sqrt{5}$ is an irrational number

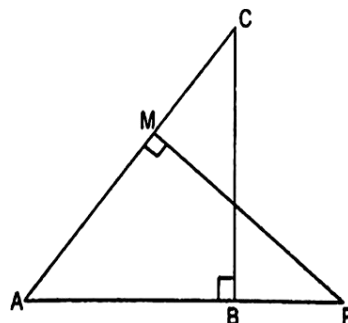
27. A girl of height 90 cm is walking away from the base of a lamp - post at a speed of 1.2 m/s . If the lamp is 3.6 m above the ground, find the length of her shadow after 4 seconds.

(or)

In the given figure, ABC and AMP are two right triangles, right angled at B and M respectively. Prove that

(i) $\triangle ABC \sim \triangle AMP$

(ii) $\frac{CA}{PA} = \frac{BC}{MP}$



28. The sum of two numbers, as well as the difference of their squares is 9. Find the numbers.

29. Find the ratio in which the y - axis divides the line segment joining the points $(-1, -4)$ and $(5, -6)$. Also find the co - ordinates of the point of intersection.

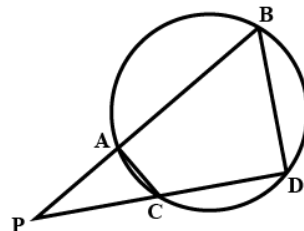
30. Solve for x : $9x^2 - 6b^2x - (a^4 - b^4) = 0$
 (or)

Find two consecutive numbers whose square have the sum 85

31. In the figure, two chords AB and CD of a circle intersect each other at the point P (when produced) outside the circle. Prove that

(i) $\triangle PAC \sim \triangle PDB$

(ii) $PA \cdot PB = PC \cdot PD$



SECTION – D

(4 X 5 = 20)

32. Solve the system of equations graphically : $2x + y = 2$; $2y - x = 4$. What is the area of the triangle formed by the two lines and the line $y = 0$?

33. Show that ΔABC where $A(-2, 0)$, $B(2, 0)$, $C(0, 2)$ and ΔPQR where $P(-4, 0)$, $Q(4, 0)$, $R(0, 4)$ are similar triangles

(or)

Determine the ratio in which the line $2x + y - 4 = 0$ divide the line segment joining the points $A(2, -2)$ and $B(3, 7)$

34. State and prove “Basic Proportionality Theorem”

Using the above theorem prove the following,

If a line intersects sides AB and AC of a ΔABC at D and E respectively and is parallel to BC , prove that

$$\frac{AD}{AB} = \frac{AE}{AC}$$

35. In a class test, the sum of Arun’s marks in Hindi and English is 30. Had he get 2 marks more in Hindi and 3 marks less in English, the product of the marks would have been 210. Find his marks in the two subjects ?

(or)

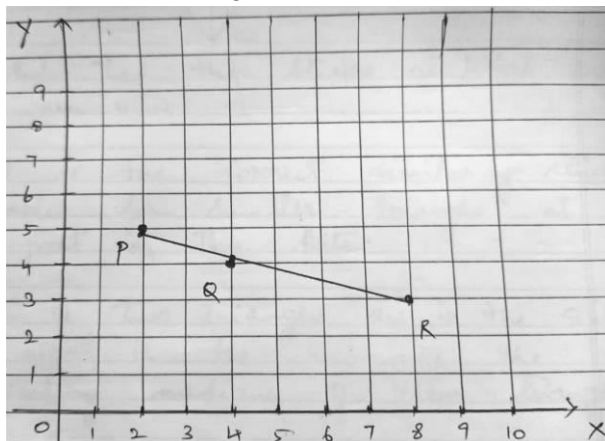
Solve for x : $x^2 + 5x - (\alpha + 1)(\alpha + 6) = 0$

SECTION – E

(3 X 4 = 12)

Case study based Questions are compulsory:

36. A group of class 10 students goes to picnic during vacation. There were three different slides and three friends Ajay, Ram and Shyam are sliding in the three slides. The position of the three friends shown by P, Q and R in three different slides are given below.



(a) Find the distance PR

(b) The coordinates of the mid – point PR is _____

(c) Find the coordinates of the point ‘ Q ’ which divides the line segment PR in the ratio of 1 : 2 internally.

(or)

If we shift origin ‘ O ’ by 2 units towards right and 1 unit towards North, then the coordinates of R will be _____

37. Rahul is studying in X standard. He is making a kite to fly it on a Sunday. Few questions came to his mind.

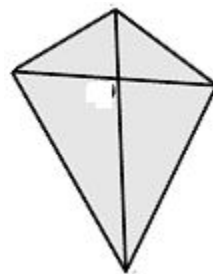
(a) Rahul tied the sticks at what angles to each other?

(b) What is the correct similarity criteria applicable for smaller triangles at the upper part of this kite?

(c) Sides of two triangles are in the ratio 4 : 9. What is the ratio of the corresponding medians of these triangles

(or)

What is the area of the kite, formed by two perpendicular sticks of length 6 cm and 8 cm?



38. A book store shopkeeper gives books on rent for reading. He has variety of books in this store related to fiction, stories and quizzes etc. He takes a fixed charge for the first two days and an additional charge for subsequent day. Amruta paid Rs. 22 for a book and kept for 6 days; while Radhika paid Rs. 16 for keeping the book for 4 days.

Assume that the fixed charge be Rs x and additional charge (per day) be Rs y .

Based on the above information, answer the following questions:

(a) Frame the algebraic equation for Radhika

(b) Frame the algebraic equation for Amruta

(c) What are the additional charges for each subsequent day for a book ?

(or)

What is the total amount paid by both, if both of them have kept the book for 2 more days ?

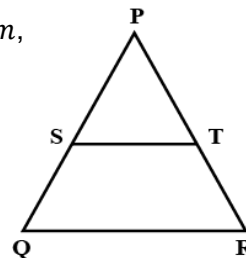
General Instructions:

- This Question Paper has 5 Sections A – E.
- Section A has 20 MCQs carrying 1 mark each
- Section B has 5 questions carrying 02 marks each.
- Section C has 6 questions carrying 03 marks each.
- Section D has 4 questions carrying 05 marks each.
- Section E has 3 case based integrated units of assessment (04 marks each) with sub – parts of the values of 1, 1 and 2 marks each respectively.
- All questions are compulsory. However, an internal choice in 2 questions of 5 marks, 2 questions of 3 marks and 2 questions of 2 marks has been provided. An internal choice has been provided in the 2 marks questions of Section E
- Draw neat figures wherever required.

SECTION – A

(1 X 20 = 20)

- The prime factorisation of 8190 is
 (a) $2 \times 3^2 \times 5^2 \times 7 \times 13$ (b) $2^2 \times 3 \times 5 \times 7 \times 13$
 (c) $2 \times 3^2 \times 5 \times 7 \times 13$ (d) $2 \times 3 \times 5 \times 7^2 \times 13$
- The pair of equations $y = 0$ and $y = -7$ has
 (a) One solution (b) Two solutions (c) Infinitely many solutions (d) No solution
- If $(2, -5)$ is the mid point of PQ , then the coordinates of P and Q are
 (a) $P(0, -10) Q(4, 0)$ (b) $P(-10, 0) Q(0, 4)$
 (c) $P(0, -10) Q(0, 4)$ (d) $P(-10, 0) Q(4, 0)$
- If $A(4, -2)$, $B(7, -2)$ and $C(7, 9)$ are vertices of a $\triangle ABC$, then $\triangle ABC$ is
 (a) Equilateral triangle (b) Isosceles triangle
 (c) Right – angled triangle (d) Isosceles right angled triangle
- The distance between the points $(m, -n)$ and $(-m, n)$ is
 (a) $\sqrt{m^2 + n^2}$ units (b) $(m + n)$ units (c) $2\sqrt{m^2 + n^2}$ units (d) $\sqrt{2m^2 + 2n^2}$ units
- In the following figure, $ST \parallel QR$, point S divides PQ in the ratio $4 : 5$. If $ST = 1.6$ cm, the length QR is
 (a) 0.71 cm (b) 2 cm (c) 3.6 cm (d) 4 cm



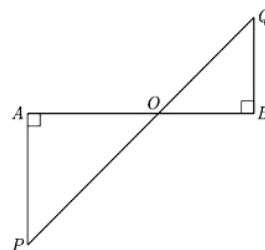
- It is given that $\triangle ABC \sim \triangle DFE$, $\angle A = 30^\circ$, $\angle C = 50^\circ$, $AB = 5$ cm, $AC = 8$ cm, $DF = 7.5$ cm, $BC = 12$ cm. Then the following is true.
 (a) $DE = 12$ cm, $\angle F = 50^\circ$ (b) $DE = 12$ cm, $\angle F = 100^\circ$
 (c) $EF = 12$ cm, $\angle D = 100^\circ$ (d) $EF = 12$ cm, $\angle D = 30^\circ$
- The LCM of two numbers is 2400. Which of the following can't be their HCF?
 (a) 300 (b) 400 (c) 500 (d) 600
- $2x + y = 23$ and $4x - y = 19$, then the value of $5y - 2x$ is
 (a) 30 (b) 31 (c) 35 (d) 72
- Let a and b be two positive integers such $a = p^3 q^4$ and $b = p^2 q^3$ where p and q are prime numbers. If $HCF(a, b) = p^m q^n$ and $LCM(a, b) = p^r q^s$, then $(m + n)(r + s)$ is
 (a) 15 (b) 30 (c) 35 (d) 72
- If the system of equations $3x + y = 1$ and $(2k - 1)x + (k - 1)y = 2k + 1$ is inconsistent, then $k =$ _____
 (a) -1 (b) 0 (c) 1 (d) 2
- If vertices of a parallelogram $PQRS$ taken in order are $P(3, 4)$, $Q(-2, -3)$ and $R(-3, -2)$ then the coordinates of the fourth vertex S are
 (a) $(-2, -1)$ (b) $(-2, -3)$ (c) $(2, 5)$ (d) $(1, 2)$
- $ABCD$ is a trapezium with $AD \parallel BC$ and $AD = 4$ cm. If diagonals AC and BD intersect each other at O , such that $\frac{AO}{OC} = \frac{DO}{OB} = \frac{1}{2}$, then $BC =$
 (a) 6 cm (b) 7 cm (c) 8 cm (d) 9 cm
- Which of the following is not a Quadratic Equation?
 (a) $2(x - 1)^2 = 4x^2 - 2x + 1$ (b) $2x - x^2 = x^2 + 5$
 (c) $(\sqrt{2}x + \sqrt{3})^2 + x^2 = 3x^2 - 5x$ (d) $(x^2 + 2x)^2 = x^4 + 3 + 4x^3$

15. How many roots does the Quadratic Equation $293x^2 - 293x = 0$ have?

- (a) 0 (b) 1 (c) 2 (d) 3

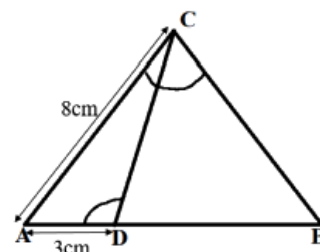
16. In the given figure if $\angle A = 90^\circ, \angle B = 90^\circ, OB = 4.5 \text{ cm}, OA = 6 \text{ cm}, AP = 4 \text{ cm}$, then QB is

- (a) 4 cm
(b) 3 cm
(c) 5 cm
(d) 4.5 cm



17. In the following figure, $\angle ACB = \angle CDA$, $AC = 8 \text{ cm}, AD = 3 \text{ cm}$, then BD is

- (a) $22/3 \text{ cm}$
(b) $26/3 \text{ cm}$
(c) $55/3 \text{ cm}$
(d) $64/3 \text{ cm}$



18. The quadratic equation $x^2 - 3x + 11 = 0$ has

- (a) No roots (b) No real roots (c) Two equal roots (d) Two distinct real roots

19. Assertion (A) : $HCF(a, b) = 4, ab = 96 \times 404$. Then $LCM(a, b) = 9696$

Reason (R) : LCM of 2 numbers a and $b = HCF(a, b) \times ab$

- (a) Both Assertion (A) and Reason (R) are correct
(b) Assertion (A) is true, Reason (R) is false
(c) Assertion (A) is false but Reason (R) is true
(d) Both Assertion (A) and Reason (R) are false

20. Assertion (A) : If $2 + \sqrt{3}$ is a root of the quadratic equation with rational coefficients, then its other root is $2 - \sqrt{3}$

Reason (R) : Surd roots of a quadratic equation with rational coefficients occur in conjugate pairs

- (a) Assertion (A) is true and Reason (R) is its correct explanation
(b) Both Assertion (A) and Reason (R) are true
(c) Both Assertion (A) and Reason (R) are false
(d) Assertion (A) is false, Reason (R) is true

SECTION - B

21. Solve the quadratic equation : $x^2 + 2\sqrt{2}x - 6 = 0$ for x

22. A fraction becomes $\frac{1}{3}$ when 1 is subtracted from the numerator and it becomes $\frac{1}{4}$ when 8 is added to its denominator. Find the fraction

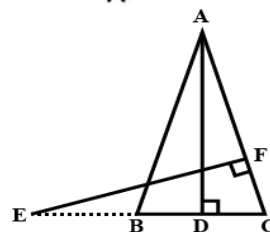
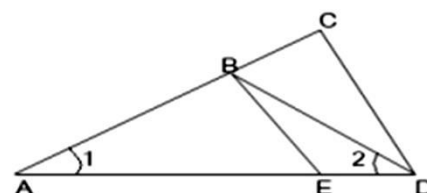
(or)

Solve the pair of equations by the substitution method : $3x + 4y = 10$
 $2x - 2y = 2$

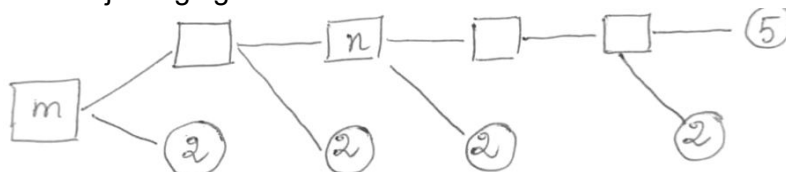
23. In the given figure below $\frac{AD}{AE} = \frac{AC}{BD}$ and $\angle 1 = \angle 2$. Show that $\triangle BAE \sim \triangle CAD$

(or)

In figure E is a point on side CB produced of an isosceles triangle ABC with $AB = AC$. If $AD \perp BC$ and $EF \perp AC$, prove that $\triangle ABD \sim \triangle ECF$.



24. Find $(m + n)$ from the adjoining figure.



25. Find the ratio in which the x axis divides the line segment joining the points $A(2, 3)$ and $B(4, -8)$

SECTION - C

26. Given that $\sqrt{3}$ is irrational, prove that $5 + 2\sqrt{3}$ is irrational (or) Prove that $\sqrt{5}$ is irrational

27. Solve for x using quadratic formula : $4x^2 + 4bx - (a^2 - b^2) = 0$

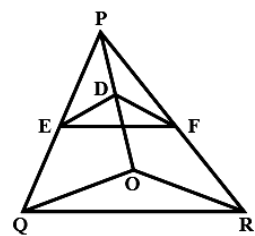
28. Find the values of x and y from the given pair of equations : $49x + 51y = 499$

$$51x + 49y = 501$$

(or)

Find values of a and b if this pair of linear equations has infinite solutions $2x + 3y = 7$
 $(a - b)x + (a + b)y = 3a + b - 2$

29. In the given figure $DE \parallel OQ$ and $DF \parallel OR$. Show that $EF \parallel QR$



30. Prove that the points $(3, 0)$ $(6, 4)$ and $(-1, 3)$ are the vertices of a right angled isosceles triangle

31. (i) Find the discriminant of $x^2 + 31 = 0$
 (ii) If the quadratic equation $Px^2 - 2\sqrt{5} Px + 15 = 0$ has 2 equal roots, then find the value of P .

SECTION – D

32. State and prove “THE BASIC PROPORTIONALITY THEOREM”

(or)

A girl of height 90 cm is walking away from the base of a lamp post at the speed of 1.2 m per second. If the lamp is 3.6 m above the ground, find the length of her shadow after 4 seconds.

33. Shade the region bounded by the lines $x + 3y = 6$ and $2x - 3y = 12$ with the y axis. Also find the solution graphically.

(or)

Solve graphically : $x - y + 1 = 0$ and $3x + 2y - 12 = 0$

34. An express train makes a run of 240 km at a certain speed. Another train , whose speed is 12 km/hr less takes an hour longer to cover the same distance . Find the speed of the express train in km/hr

35. $ABCD$ is a quadrilateral formed by the points $A(-1, -1)$, $B(-1, 4)$, $C(5, 4)$ and $D(5, -1)$. P, Q, R, S are mid points of sides AB, BC, CD and DA respectively. Name the type of quadrilateral $PQRS$

SECTION – E

36. A test consists of True or False questions: 1 mark is awarded for every correct answer and $\frac{1}{4}\text{ m}$ is deducted for every wrong answer. A student knew answers to some of the questions. Rest he attempted by guessing. He answered 120 questions and scored 95 marks.

- (i) Find the number of questions he guessed
 (ii) If answer to all questions he attempted by guessing was wrong, then find the number of questions he answered correctly
 (iii) If answer to all questions he attempted by guessing were wrong and he answered 80 questions correct, then find the marks he got?

(or)

(iv) If answer to all questions he attempted by guessing was wrong, the find the number of questions answered correctly to score 80 marks?

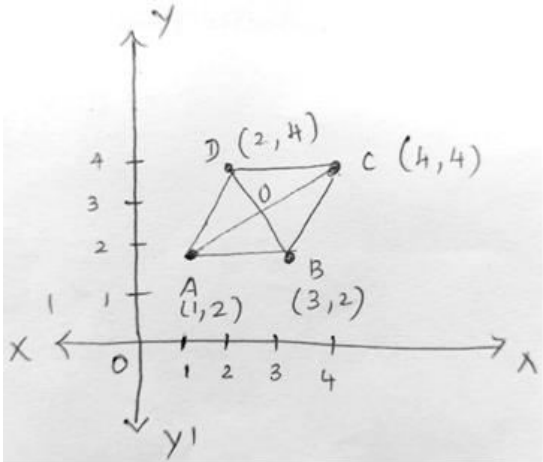
37. (i) Using distance formula , prove that $AB = CD$

(ii) Diagonals AC and BD of quadrilateral $ABCD$, meet at ' O '. Find the midpoints of AC and BD

(iii) If $A(6, 1)$ $B(8, 2)$ and $C(9, 4)$ are 3 vertices of a parallelogram $ABCD$ and E is the midpoint of CD , then find the coordinates of E (2 m)

(or)

(iv) If $P(5, 2)$ $Q(2, -2)$ and $R(2, y)$ are vertices of a right triangle. Where $\angle Q = 90^\circ$, find y .



38. Quadratic equations has many aspects in real life. Quadratic equations are very useful while calculating areas of a room or perimeter a plot of land etc. For example, Rajuvinder need to make a top of a study table whose length is 1.5 m longer than its breadth. He has various questions in his mind. Help him to answer the questions

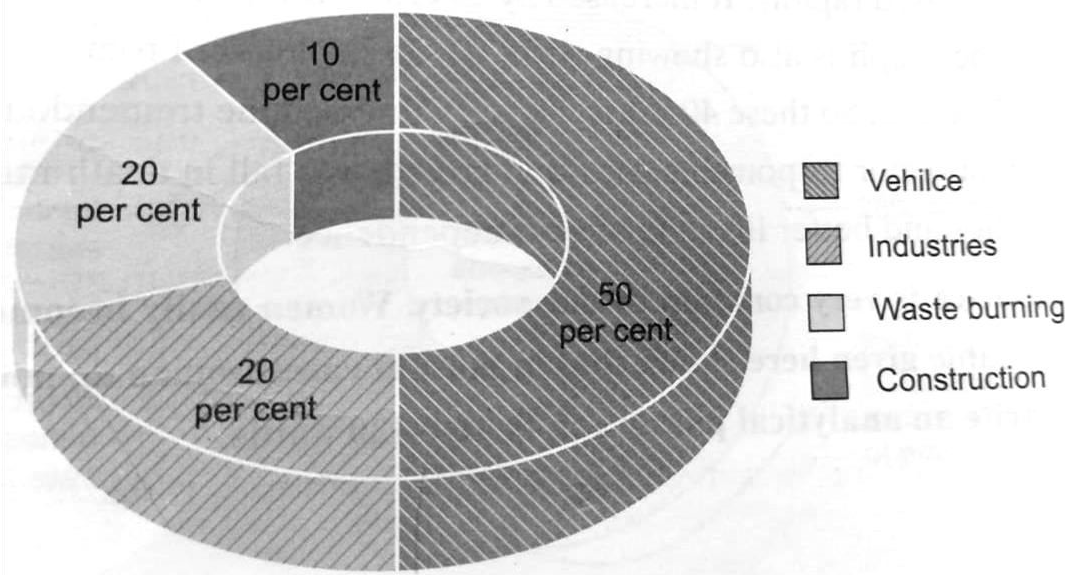
- (i) If Rajuvinder has 3 m^2 of plywood. He used it to make a top of a study table whose length is 1.5 m longer than its breadth. Represent this situation in form of Quadratic equation.
 (ii) What are the dimensions of top of the study table?
 (iii) If Rajuvinder keeps the length and breadth of top of study table equal then what is the Quadratic equation representing this situation?

(or)

What are the dimensions of square shape study table?

.....

Air Pollution in Metropolitan Cities in India



General instructions:

- This question paper consists of 39 questions in 5 sections.
- All questions are compulsory. However, an internal choice is provided in some questions. A student is expected to attempt only one of these questions.
- Section A consists of 20 objective type questions carrying 1 mark each.
- Section B consists of 6 Very Short questions carrying 02 marks each. Answers to these questions should be in the range of 30 to 50 words.
- Section C consists of 7 Short Answer type questions carrying 03 marks each. Answers to these questions should be in the range of 50 to 80 words.
- Section D consists of 3 Long Answer type questions carrying 05 marks each. Answers to these questions should be in the range of 80 to 120 words.
- Section E consists of 3 source-based/case-based units of assessment of 04 marks each with sub-parts.

SECTION – A

Select and write one most appropriate option out of the four options given for each of the questions: 1 – 20.

- The substance oxidized and Reduced in $\text{Zn} + \text{C} \rightarrow \text{Zn} + \text{CO}$
a) C and ZnO b) ZnO and CO c) Zn and CO d) ZnO and C
 - Oxidation is defined as
a) The addition of oxygen b) removal of Hydrogen c) both a and b d) none of these
 - In the electrolysis of water, name the gas collected at anode and cathode
a) Hydrogen and oxygen b) Oxygen and Hydrogen
c) Nitrogen and oxygen d) oxygen and nitrogen
 - $\text{Na}_2\text{SO}_4 + \text{BaCl}_2 \longrightarrow \text{BaSO}_4 + 2\text{NaCl}$
a) Displacement reaction b) Double displacement c) precipitation reaction d) both b and c
 - Which solution will change blue litmus to red?
a) NaOH (aq) b) H_2SO_4 (aq) c) KCl (aq) d) NH_4OH (aq)
 - Which of the following gives the correct increasing order of acidic strength?
a) Water < Acetic Acid < Hydrochloric Acid b) Water < Hydrochloric Acid < Acetic Acid
c) Acetic Acid < Water < Hydrochloric Acid d) Hydrochloric Acid < Water < Acetic Acid
 - Which of the following solution will turn phenolphthalein in to Pink?
a) HCl(aq) b) CO_2 (aq) c) KOH (aq) d) H_2SO_4 (aq)
 - What prevents backflow of blood inside the heart during contraction?
a) Thin walls of atria b) Valves in heart c) Thick muscular walls of ventricles d) All of the above
 - In a synapse chemical signal is transmitted from
a) Dendritic end of one neuron to axonal end of another neuron
b) Axon to cell body of the same neuron
c) Cell body to axonal end of the same neuron
d) Axonal end of one neuron to dendritic end of another neuron
 - Name an organism which reproduce by multiple fission
a) hydra b) plasmodium c) planaria d) yeast
 - Name the asexual method of reproduction in Rhizopus
a) Budding b) spore formation c) fission d) fragmentation
 - In a neuron, conversion of electrical signal to a chemical signal occurs at / in.
a) cell body b) axonal end c) dendritic end d) axon
 - Rays from the Sun converge at a point 15 cm in front of a concave mirror. Where should an object be placed so that the size of its image is equal to the size of the object?
a) 15 cm in front of the mirror b) 30 cm in front of the mirror
c) Between 15 cm and 30 cm in front of the mirror d) More than 30 cm in front of the mirror
 - A person cannot see distinctly objects kept beyond 2m. This defect can be corrected by using a lens of power?
a) + 0.5D b) - 0.5D c) + 0.2D d) - 0.2D
 - If the speed of light in medium 1 and medium 2 are 2.5×10^8 m/s and 2×10^8 m/s respectively, then the refractive index of medium 1 with respect to medium 2 is:
a) $\frac{3}{2.5}$ b) $\frac{2}{2.5}$ c) $\frac{2.5}{3}$ d) $\frac{2.5}{2}$
 - The far point of a myopic person is **80 cm** in front of the eye. What is the nature and power of lens required.
a) convex, power + 1.25 D b) Convex , power +2D'
c) concave , power – 1.25 D d) concave , power – 2D
- Q. no 17 to 20 are Assertion and Reason based questions. These consist of two statements – Assertion (A) and Reason (R). Answer these questions selecting the appropriate option given below:
- Both A and R are true and R is the correct explanation of A
 - Both A and R are true and R is not the correct explanation of A
 - A is true but R is false
 - A is false but R is true

- 17) Assertion - HCl gas does not change the colour of dry blue litmus paper.

Reason - HCl gas dissolves in the water present in wet litmus paper to form H^+ ions.

- 18) Assertion: Amoeba reproduces by fission.
Reason: All unicellular organisms reproduce by asexually
- 19) Assertion: Digestion breaks large complex molecules to simple smaller molecules which can be easily absorbed
Reason : Digestion is necessary for the absorption of all molecules.
- 20) Assertion: Light travels faster in glass than in air
Reason: Glass is denser than air

SECTION – B

- 21) What is Baking powder? How does it make the cake soft and spongy.
(or)
Balance the following chemical equation:
a) $\text{HNO}_3 + \text{Ca}(\text{OH})_2 \rightarrow \text{Ca}(\text{NO}_3)_2 + \text{H}_2\text{O}$
b) $\text{NaOH} + \text{H}_2\text{SO}_4 \rightarrow \text{Na}_2\text{SO}_4 + \text{H}_2\text{O}$
- 22) Patients whose gallbladder are removed are recommended to eat less oily food . why?
- 23) Name the reproductive and non – reproductive parts of bread – mould?
- 24) Different parts of brain are associated with specific functions. Name the parts of human brain which performs the following functions:
a) Sensation of feeling full _____
b) Vomiting _____
c) picking up a pencil _____
d) Riding a bicycle _____
- 25) a) State the relation between object distance, image distance and focal length of a spherical mirror.
b) Draw a ray diagram to show the image formed by a concave mirror when an object is placed between pole and focus of the mirror.
(or)
A concave mirror of focal length 15cm forms an image of an object kept at a distance of 10cm from the mirror. Find the position, nature and size of the image formed by it.
- 26) What is vegetative propagation? State two advantages of this method

SECTION – C

- 27) What is the colour of silver chloride ? What happens when kept under the sunlight? Write the equation.
- 28) a) Identify substances that are oxidizing agent and the substances that are reducing agent in the following reactions: $\text{CuO} + \text{H}_2 \rightarrow \text{Cu} + \text{H}_2\text{O}$
b) Define Redox reaction
- 29) a) What is transpiration? List its two functions?
b) How are water and minerals transported in plants?
(or)
a) What is translocation? Why is it essential for plants?
b) How is food transported in plants?
- 30) Define the following terms for spherical mirrors:
a) Pole b) centre of curvature c) principal axis
- 31) a) What is short sightedness?
b) Write two causes for this defect
c) Draw a diagram to show how this defect can be corrected by using a suitable lens?
- 32) A convex lens is thicker in the middle and thinner at the edges
a) An object is placed at a distance of 15cm from a convex lens of focal length 20cm. List four characteristics of the image formed by the lens.
b) A convex lens has focal length of 30cm. Calculate at what distance should the object be placed from the lens so that it forms an image at 60 cm on the other side of the lens ? Find the magnification produced by the lens?
(or)
A concave lens is thicker at the edges and thinner in the middle?
a) Define principal focus of a concave lens.
b) An object 3 cm high is placed perpendicular to the principal axis of a concave lens of focal length 7.5 cm. The image is formed at a distance of 5 cm from the lens. Calculate
i) The distance at which the object is placed and
ii) size of the image formed.
- 33) Name the hormone which regulates carbohydrate protein and fat metabolism in our body? Which gland secretes this hormone? Why is it important for us to have iodised salt in our diet?

SECTION – D

- 34) When potassium iodide (KI) solution is added to a solution of lead (II) nitrate in a test tube, a precipitate is formed.
a) What is the colour of this precipitate?
b) Name the compound precipitated.
c) Write the balanced chemical equation for this reaction.
d) What type of reaction is this?
e) What change in colour is observed when silver chloride is left exposed to sunlight?
Also mention the type of chemical reaction. Write the balanced chemical equation

(or)

- i) To a solution of sodium hydroxide in a test tube two drops of phenolphthalein are added.
- State the colour change observed.
 - If dil HCl is added drop wise to the solution, what will be the colour change?
 - On adding few drops of NaOH solution to the above mixture the colour of the solution reappears. Why?
- ii) Three acidic solutions A, B and C have P^{H-} 0, 3 and 5 respectively
- Which solution has highest concentration of H^+ ions?
 - Which solution has the lowest concentration of H^+ ions?
 - How concentrated sulphuric acid can be diluted? Describe the process
- iii) Write the chemical formula :
- caustic soda
 - Plaster of paris
 - Washing soda
 - bleaching powder
- 35) a) How does binary fission differ from multiple fission? Give an example for each.
- What happens when
 - Accidentally, planaria gets cut into many pieces?
 - Bryophyllum leaf falls on the wet soil

(or)

- Differentiate between budding in hydra and yeast?
- Why is regeneration not a type of reproduction? Explain.

- 36) a) What is dispersion of light?
- What is the cause of dispersion.
 - Draw a diagram to show the dispersion of white light by a glass prism.
 - Name the colours that suffer maximum and minimum deviation respectively while passing through a prism.
 - Draw a diagram to show the path of a narrow beam of white light, through a combination of two identical prisms arranged together in an inverted position with respect to each other. When it is allowed to fall obliquely on one of the faces of the first prism of the combination

SECTION – E

Question No 37 to 39 are case – based / data based questions with 2 to 3 short sub – parts. Interval choice is provided in one of these sub parts

37) Sodium chloride is prepared by the reaction of hydrochloric acid and sodium hydroxide solution. This salt is used to prepare various compounds when electricity is passed through an aqueous solution of sodium chloride (called brine) it decomposed to form sodium hydroxide. The process is called the chlor – alkali process because of the products – formed – chlor for chlorine and alkali for sodium hydroxide.

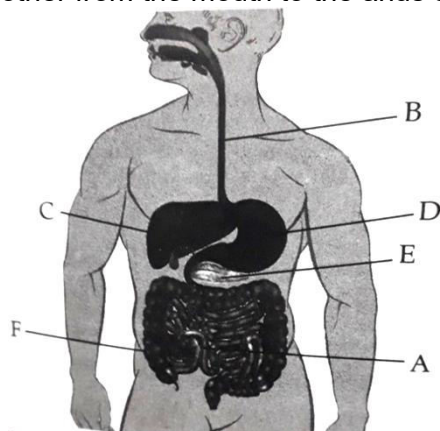
- write the chemical reaction of chlor – Alkali process?
- Name the gases formed at the anode and cathode
- Write one use of chlorine and hydrogen gas?
- What is called brine?

(or)

When copper sulphate crystals are heated, its blue colour turns white. This is because the blue colour of hydrated copper sulphate is due to water of crystallization on strong heating copper sulphate loses its water of crystallization and turns white. The anhydrous salts have no water of crystallization when drops of water is added to anhydrous salt, its blue colour reappears.

- write the chemical formula of anhydrous salt of copper sulphate?
- What is the colour of anhydrous salts of copper sulphate?
- What is the colour change when add 3 or 4 drops of water on the sample of copper sulphate obtaining after heating
- Write the chemical name of hydrated copper sulphate.

38) The given diagram is of human digestive system. The human's digestive system is made up of the gastrointestinal (GI) tract, liver, pancreas and gallbladder. The GI tract is a series of hollow organs that are connected to each other from the mouth to the anus study the diagram and answer the questions given below



- a) Identify the labels B, C, D and E
- b) What are the final products after digestion of carbohydrates and proteins?
- c) Name the secretion that is released by label C. How it helps in fat digestion.

(or)

Name the major process in region F, which is no longer occurring normally in case of diarrhea.

39) The extent of bending of light in a particular medium depends on the refractive index of the medium. More the refractive index more is the bending or denser is the medium and less will be the velocity of light in that medium. If less is the refractive index then less will be the bending or medium is rarer and velocity of light will be more in that medium.

a) If the refractive indices of glass and ice are 1.52 and 1.31 respectively. Then in which medium the velocity of light is more? Find the velocity of light in that medium (Velocity of light in air = 3×10^8 m/s)

b) The refractive index of diamond is 2.41. What is the speed of light in diamond?

c) The refractive index of glass is 1.5 and that of water is 1.33. What is the refractive index of glass with respect to water

(or)

What is the refractive index of water with respect to glass?

General instructions:

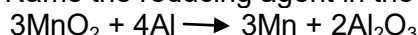
- This question paper consists of 39 questions in 5 sections.
- All questions are compulsory. However, an internal choice is provided in some questions. A student is expected to attempt only one of these questions.
- Section A consists of 20 objective type questions carrying 1 mark each.
- Section B consists of 6 Very Short questions carrying 02 marks each. Answers to these questions should be in the range of 30 to 50 words.
- Section C consists of 7 Short Answer type questions carrying 03 marks each. Answers to these questions should be in the range of 50 to 80 words.
- Section D consists of 3 Long Answer type questions carrying 05 marks each. Answers to these questions should be in the range of 80 to 120 words.
- Section E consists of 3 source-based/case-based units of assessment of 04 marks each with sub-parts.

SECTION – A

Select and write one most appropriate option out of the four options given for each of the questions: 1 – 20.

1) Write one equation each for decomposition reactions where energy is supplied in the form of light and Electricity.

2) a) Name the reducing agent in the following reaction:



b) State which is more reactive, Mn or Al and why.

3) State the type of Chemical reaction with balanced chemical equation that take place in the following:

a) Ammonia and Hydrogen chloride gases are mixed

b) Zinc metal is added to copper sulphate solution.

4) Identify 'x', 'y' and 'z' in the following balanced reaction



a) 2, 4, 2

b) 2, 2, 4

c) 2, 4, 4,

d) 4, 2, 2

5) Consider the PH value of the following acidic samples

S.NO	SAMPLE	PH Value
1.	Lemon Juice	2.2
2.	Gastric juice	1.2
3.	Vinegar	3.76
4.	Dil . Acetic acid	3.0

The decreasing order of their H^+ ion concentration is

a) $3 > 4 > 1 > 2$

b) $2 > 1 > 3 > 4$

c) $2 > 1 > 4 > 3$

d) $3 > 4 > 2 > 1$

6) What is water of crystallisation? Name and give formula of two salts which contain water of crystallisation.

7) What is aqua regia?

8) Roots of the plants absorb water from the soil through the process of

a) diffusion

b) osmosis

c) transpiration

d) translocation

9) Which plant hormone inhibits growth?

a) Auxins

b) Gibberellins

c) Cytokinins

d) Absciscic acid

10) Asexual reproduction takes place through binary fission in

a) yeast

b) Bryophyllum

c) Leishmania

d) Banana

11) Breathing controlled by which part of the brain?

a) cerebrum

b) cerebellum

c) Medulla oblongata

d) Hypothalamus

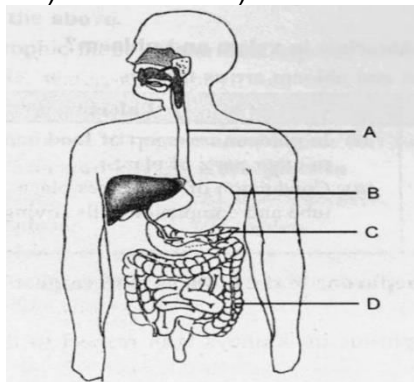
12) From the given diagram of the digestive system, identify the part labeled as gastric gland

a) A

b) B

c) C

d) D



13) If a lens can converge the sun rays at a point 20cm away from its optical centre, the power of lens is

a) +2D

b) -2D

c) +5D

d) -5D

14) For white light which colour has the maximum refractive index?

a) red

b) yellow

c) orange

d) violet

15) Crystalline lens of people at old age becomes milky and cloudy. The condition is called

a) Myopia

b) hypermetropia

c) cataract

d) presbyopia

16) The air layer of atmosphere whose temperature is less than the hot layer behave as optically

a) denser medium

b) rarer medium

c) inactive medium

d) either denser or rarer medium

Q. no 17 to 20 are Assertion and Reason based questions. These consist of two statements – Assertion (A) and Reason (R). Answer these questions selecting the appropriate option given below:

- a) Both A and R are true and R is the correct explanation of A
- b) Both A and R are true and R is not the correct explanation of A
- c) A is true but R is false
- d) A is false but R is true

17) Assertion: Bleaching powder liberate chlorine when kept in atmosphere

Reason: CaOCl_2 reacts with CO_2 present in atmosphere to form CaCO_3 and Cl_2 gas

18) Assertion: Amoeba reproduced by fission

Reason: All unicellular organisms reproduced by asexual method

19) Assertion: The opening and closing of the pore is a function of guard cells

Reason: Stomatal pores are the site for exchange of gases by diffusion

20) Assertion: The height of an object is always considered positive

Reason: An object is always placed above the principal axis in the upward direction.

SECTION – B

21) a) Why is respiration considered an exothermic reaction ?

(or)

b) Potato chips manufactures fill the packet of chips with nitrogen gas. Why?

22) What is meant by reflex action? Write the sequence of events which occur when we touch a hot object.

23) List the role of the following in our digestive system

- a) Hcl in stomach
- b) Bile juice

24) a) Name the organism and identify the process of asexual reproduction in the diagram given below:



b) Name the reproductive and non – reproductive part of such organism.

25) a) What is called dispersion of light?

b) What happens when a narrow beam of white light is incident on a solid glass prism. Show that by a diagram

(or)

a) Why the danger signal lights are red in colour?

b) Why the colour of the sky is dark to an astronaut?

26) a) What is excretion?

b) What are the methods used by plants to get rid of excretory products?

SECTION – C

27) Write the chemical equation of the reaction in which of the following changes have taken place with an example of each .

- a) change in colour
- b) change in temperature
- c) formation of precipitate

28) Give reason for the following statements

- a) Tap water conducts electricity where as distilled water does not
- b) Dry Hydrogen chloride gas does not turn blue litmus red where as dilute Hydrochloric gas acid does.
- c) For a dilution of acid, acid is added into water and not water into acid

29) With the help of the schematic flow chart show the breakdown of glucose in a cell to provide energy.

(or)

Define “breathing”. Explain the mechanism of breathing in humanbeings.

30) a) Define 1 Dioptre

b) A convex lens of power 3D is held in contact with a concave lens of power – 1D. A parallel beam of light is made to fall on the combination. At what distance from the combination will the beam be focused?

31) Complete the ray diagram

a)

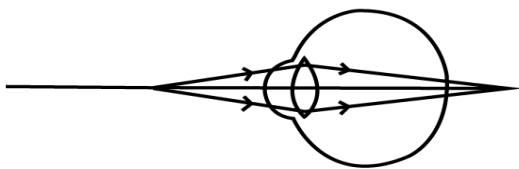
b)

c)

32) Sketch the diagram of a human Eye and mention the parts.

(or)

i) Identify the defect from the given diagram



ii) What are the causes of this defect?

iii) A person is unable to see objects nearer than 50cm. He wants to read a book placed at a distance of 25cm. find the nature, focal length and power of the lens, he requires for his spectacles.

33) Name the hormones secreted by the following endocrine glands and specify the functions of each.

a) Thyroid b) Pituitary c) Pancreas

SECTION – D

34) A metal carbonate 'X' on reacting with an acid gives a gas which when passed through a solution 'Y' gives the carbonate back. On the other hand, a gas 'G' that is obtained at anode during electrolysis of Brine is passed on dry 'Y' it gives a compound 'Z' used for disinfecting drinking water. Identify 'X', 'Y', 'Z', 'G'.

(or)

a) How is washing soda prepared from sodium carbonate? Give its chemical equation. State the type of this salt

b) Name the type of hardness of water which can be removed by it

c) What is the role of toothpastes in preventing cavities?

35)a) What is meant by DNA copying? Mention its importance in reproduction.

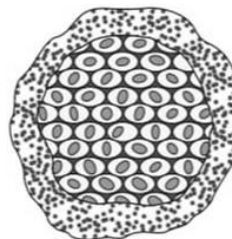
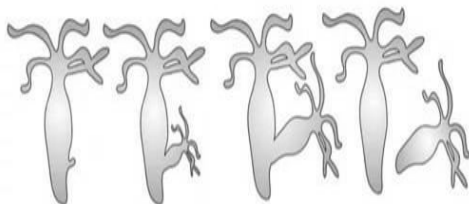
b) With the help of diagram explain the process of Regeneration and Fragmentation

(or)

a) Identify the organism A, B and explain the mode of Asexual reproduction

a)

b)



b) What is Vegetative propagation? State two advantages and disadvantages of this method.

36) A student focused the image of a candle flame on a white screen using a convex lens. He noted down the position of the candle, screen and the lens as given below:

Position of the candle: 12.0cm

Position of the convex lens: 50.0cm

Position of the screen : 88.0cm

i) What is the focal length of the convex lens?

ii) Where will the image be formed if he shifts the candle towards the lens at a position of 31.0cm?

iii) What will be the nature of the image formed if he further shift the candle towards the lens?

iv) Draw a ray diagram to show the formation of the image in case (iii) as said above

37) Chemical reaction involves chemical changes in which new substances with new properties are formed, when two or more substances react with each other. Combination, decomposition, (thermal, electrical and photo chemical) displacement, double displacement (precipitation) redox (oxidation and reduction) are various types of chemical reaction.

a) Which of the following is marble?

- a) CaCO_3 b) Ca(OH)_2 c) CaO d) CaCl_2

b) Name the substance which is used in photographic and X – Ray films

c) Potassium reacts with water to form

- a) $\text{K}_2\text{O} + \text{H}_2$ b) $\text{KOH} + \text{H}_2$ c) K_2O only d) KOH only

d) Iron reacts with Cl_2 to form

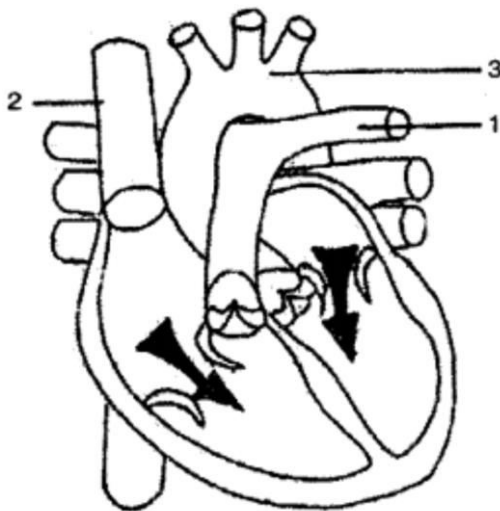
- a) FeCl_2 b) FeCl_3 c) FeCl d) none of the above

(or)

e) Copper reacts with O_2 to form _____

38) A normal human heart is a strong hardworking pump of muscle tissue. It is about the size of a person's fist and heart comprises four chambers.

a) Label the parts 1, 2 and 3 in the given diagram



b) Name the blood vessel that brings oxygenated blood to the heart

c) Why is it necessary to separate oxygenated and deoxygenated blood in mammals and birds?

(or)

What is blood pressure? How is it measured? Give one difference between systolic pressure and diastolic pressure.

39) Light seems to travel along straight line paths in a transparent medium. This is true as long as light rays travelling in the same medium having the same density throughout. If however the light rays are made to go from one medium to another, the light rays change their direction (or bend) at the boundary between the two media.

i) State Snell's law.

ii) What is called lateral displacement?

iii) The refractive index of glass is $\frac{3}{2}$ and refractive index of water is $\frac{4}{3}$. What would be the refractive index of water with respect to glass? Does light travel faster in glass or in water?

(or)

Light enters from air into diamond, which has a refractive index of 2.42. Calculate the speed of light in diamond. The speed of light in air is 3×10^8 m/s.

General instructions:

- This question paper consists of 39 questions in 5 sections.
- All questions are compulsory. However, an internal choice is provided in some questions. A student is expected to attempt only one of these questions.
- Section A consists of 20 objective type questions carrying 1 mark each.
- Section B consists of 6 Very Short questions carrying 02 marks each. Answers to these questions should be in the range of 30 to 50 words.
- Section C consists of 7 Short Answer type questions carrying 03 marks each. Answers to these questions should be in the range of 50 to 80 words.
- Section D consists of 3 Long Answer type questions carrying 05 marks each. Answers to these questions should be in the range of 80 to 120 words.
- Section E consists of 3 source-based/case-based units of assessment of 04 marks each with sub-parts.

SECTION – A

Select and write one most appropriate option out of the four options given for each of the questions: 1 – 20.

- Name both the phenomenon occurring when, a small amount of acid is added to water.
- Name the reducing agent in the following reaction.
 $3\text{MnO}_2 + 4\text{Al} \rightarrow 3\text{Mn} + 2\text{Al}_2\text{O}_3$ state which is more reactive? Why?
- Balance the given chemical equation

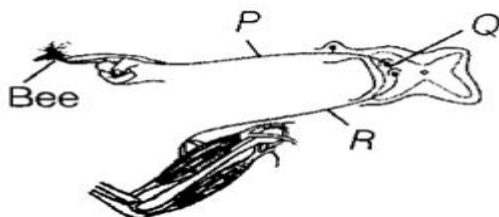
$$\text{FeSO}_{4(s)} \xrightarrow{\text{heat}} \text{Fe}_2\text{O}_{3(s)} + \text{SO}_{2(s)} + \text{SO}_{3(s)}$$

$$\text{NaOH}_{(ar)} + \text{H}_2\text{SO}_{4(aq)} \rightarrow \text{Na}_2\text{SO}_{4(s)} + \text{NaCl}_{(or)}$$
- Sodium carbonate is a basic salt because it is a salt of _____ and _____
 a) strong acid and strong base b) strong acid and weak base
 c) weak acid and strong base d) weak acid and weak base
- Give one word for water soluble bases give an example:
- In which of the following, the identity of initial substance remains unchanged.
 a) Curdling of milk b) Formation of crystals by process of crystallization
 c) Fermentation of grapes d) Digestion of food
- Which compound gives shiny white finish to the walls.
- The table shows the characteristics of blood in one blood vessel of the body.

Oxygen concentration	CO ₂ concentration	Pressure
High	Low	High

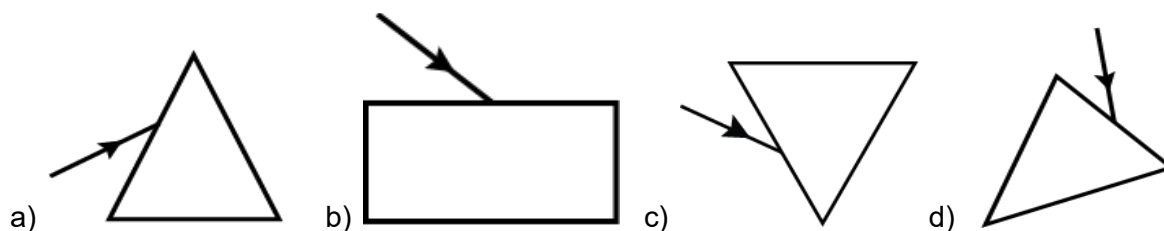
Which blood vessel contains blood with these characteristics?

- vena cave
 - Pulmonary Vein
 - Aorta
 - Pulmonary artery
- Growth of pollen tube towards ovule during fertilisation is an example of .
 a) Photo tropism b) geotropism c) chemotropism d) hydrotropism
 - The diagram shows a reflex arc in which a bee sting causes the arm to be moved quickly

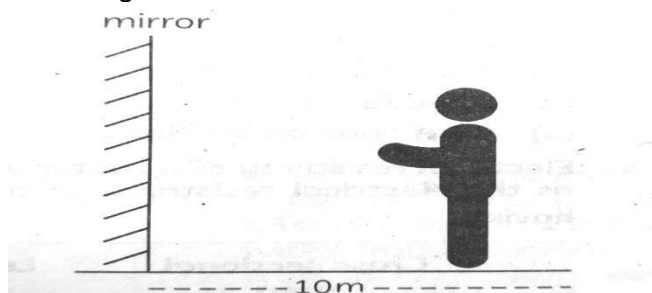


If the relay neuron is damaged, how will the transmission of nerve impulses in the reflex arc be affected?

- Impulses cannot pass from P- Q
 - Impulses cannot pass from P- R
 - Impulses cannot pass from Q- P
 - Impulses cannot pass from R- Q
- The development of off spring from any part of the body is called.
 a) asexual reproduction b) sexual reproduction c) vegetative reproduction d) all the above
 - In the list of Organisms given below, those that reproduce by the asexual method are
 i) Banana (ii) Dog (iii) Yeast (iv) Amoeba
 (a) (ii) and (iv) (b) (i), (iii) and (iv) (c) (i) and (iv) (d) (ii), (iii) and (iv)
 - The possible cause of cataract is
 a) Excessive curvature of the eye lens b) elongated eye ball
 c) weakened ciliary muscle d) Opaque eye lens
 - A concave mirror with a 36cm radius of curvature creates an upright image three times the size of the object what position does the image occupy?
 a) Behind the mirror b) in front of the mirror
 c) Focus of the mirror d) Anywhere on the mirror
 - In which of the following cases will no dispersion takes place when sunlight passes through it?



- 16) A man stands in front of a large plane mirror as shown in the figure. How far must he walk before he is 5m away from his image?



- a) 7.5m b) 8.5m c) 7.0m d) 8.0m

Q. no 17 to 20 are Assertion and Reason based questions. These consist of two statements – Assertion (A) and Reason (R). Answer these questions selecting the appropriate option given below:

- a) Both A and R are true and R is the correct explanation of A
 b) Both A and R are true and R is not the correct explanation of A
 c) A is true but R is false
 d) A is false but R is true

- 17) Assertion: Gas bubbles are observed when sodium carbonate is added to dilute HCl.

Reason: carbon dioxide is given off in the reaction.

- 18) Assertion: Amoeba shows multiple fission during unfavorable conditions

Reason: Chances of survival are less during unfavorable conditions

- 19) Assertion: A sexual reproduction is a primitive type of reproduction

Reason: Asexual reproduction involves only mitotic cell division.

- 20) Assertion: The rainbow is a man made spectrum of sunlight in the sky.

Reason: The rainbow is formed in the sky when the sun is shining and it is raining at the same time.

SECTION – B

- 21) You might have noticed that when copper powder is heated in a china dish, the reddish brown surface of copper powder becomes coated with black colour substance.

- i) Why has this black substance formed?
 ii) What is the name of the black substance?
 iii) Write the chemical equation of the reaction that takes place.
 iv) How can the black substance react with Hydrogen.

(or)

Define the terms with suitable equation

- i) oxidation ii) Reduction

- 22) a) Leakage of blood from vessels reduces the efficiency of pumping system. How is the leakage prevented?

- b) State the function of WBC

- 23) a) Differentiate between “sensory neuron and motor neuron”

- b) How is brain protected in our body?

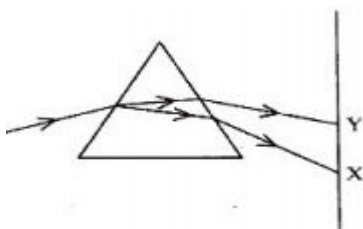
- 24) a) What will happen to a plant if its xylem is removed?

- b) Name the tissue which transports soluble products of photosynthesis in a plant.

- 25) How will you use two identical prisms so that a narrow beam of white light incident on one prism emerges out of the second prism as white light? Draw a diagram.

(or)

In the figure given below, a narrow beam of white light is shown to pass through a triangular glass prism. After passing through the prism, it produces a spectrum XY on the screen.



- i) Name the phenomenon and state the colours seen at X and Y.
 ii) Why do different colours of white light bend at different angles through a prism?

- 26) a) Name the causative organism of the disease ‘kala – azar’ and its mode of asexual reproduction.

b) What is the effect of DNA copying which is not perfectly accurate in the reproduction process?

SECTION – C

27) Write the balanced chemical equation for the following:

- Calcium hydroxide + Carbon dioxide \rightarrow Calcium carbonate
- Zinc + Silver nitrate \rightarrow Zinc nitrate + Silver
- Potassium + water \rightarrow Potassium hydroxide + Hydrogen
- Aluminium + Copper chloride \rightarrow Aluminium chloride + Copper
- Sodium sulphate + Barium chloride \rightarrow Barium Sulphate + sodium sulphate
- Zinc carbonate \rightarrow Zinc oxide + carbon dioxide

28) How is sodium hydroxide manufactured in industries? Name the process. In this process, a gas X is formed as a byproduct. This gas reacts with lime water to give a compound Y, which is used as a bleaching agent in the chemical industry. Identify X and Y and write the chemical equation of the reaction involved in these reaction.

29) The leaves of a plant were covered with aluminium foil, how would it affect the physiology of the plant ?
(or)

How is lymph an important fluid involved in transportation ? If lymphatic vessels get blocked, how would it affect the human body ? Elaborate.

30) A person needs a lens of power – 4.5D for correction of his vision

- What kind of defect in vision is she suffering from?
- What is the focal length of the corrective lens?
- What is the nature of the corrective lens?

31) a) State Snell's law of refraction

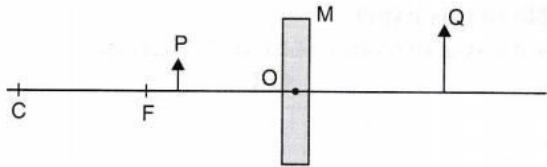
- The refractive index of dense flint glass is 1.65 and that of alcohol is 1.36 both with respect to air. Find the refractive index of dense flint glass with respect to alcohol?

32) We wish to obtain an equal-sized inverted image of a candle flame on a screen kept at a distance of 4 m from the candle flame.

- Name the type of lens that should be used.
- What should be the focal length of the lens and at what distance from the candle flame the lens be placed?
- Draw a labeled diagram to show the image formation in this case.

(or)

Consider the following diagram in which M is a mirror and P is an object and Q is its magnified image formed by the mirror



- State the type of mirror (M)
- Give one characteristic of image produced by this case
- Give any two applications of the above mirror

33) a) What are the following called:

- The place where two neurons meet _____
- Place where a neuron meets a muscle _____
- Part of the brain controlling voluntary action like balancing _____

b) How do tendrils climb on their support?

SECTION – D

34) Account for the following

- State the relation between hydrogen ion concentration of an aqueous solution and its pH.
- An aqueous solution has a pH value of 7.0. Is this solution acidic, basic or neutral ?
- Which has a higher pH value, 1 M HCl or 1 M NaOH solution ?
- Tooth enamel is one of the hardest substances in our body. How does it undergo damage due to eating chocolates and sweets ? What should we do to prevent it ?
- How do $[H^+]$ ions exist in water

(or)

- List the observations that help us to determine when a chemical reaction has taken place
- Why do silver articles become black after sometime when exposed to air
- Why do 'chips' manufacturers usually flush bags of chips with gas such as Nitrogen. Give reason for this.
- $N_{2(s)} + 3H_{2(r)} \rightarrow 2NH_{3(g)}$ Name the type of reaction.
- Why should curd and sour substances not be kept in brass and copper vessels

35) List any two modes of asexual reproduction under which mode of reproduction is vegetative propagation placed and why? List two advantages and disadvantages of vegetative propagation.

(or)

"Regeneration is not same as reproduction"

- Justify the statement
- What is meant by regeneration ?

- c) How is this process different from fragmentation?
- 36) A student wants to project the image of a candle flame on a screen 60 cm in front of a mirror by keeping the candle flame at a distance of 15 cm from its pole.
- Which type of mirror should the student use?
 - Find the magnification of the image produced.
 - Find the distance between the object and its image.
 - Draw a ray diagram to show the image formation in this case and mark the distance between the object and its image

SECTION – E

37) Read the passage and answer the following questions

Suhana wanted her home to be white washed. She bought 10 kg of quicklime from the market and dissolved it in 30 litres of water. On adding quicklime to water she noticed that the water started boiling even when it was not being heated.

- Name the product when water is added to quicklime.
 a) Calcium oxide b) calcium hydroxide c) calcium dioxide d) calcium carbonate
- The chemical name for quicklime
 a) calcium hydroxide b) calcium dioxide c) calcium oxychloride d) calcium carbonate
- The correct formula for calcium hydroxides
 a) CaOH b) Ca(OH)₂ c) CaOH₂ d) Ca₂ OH₄
 (or)

Write the balanced equation when quicklime is dissolved in water.

38) Naren was participating in a marathon, He was running at position two, right from the beginning. Just when he was near the finishing line, he started running even faster so as to stand first And when he was about to win the marathon, he got a severe muscle cramp in his leg. This cramp prevented Naren from running any further and shattered his dream of winning the marathon.

- The process which provides most of the energy in Naren for running the marathon is _____
- Why does he got a severe muscle cramp?
- i) Based on the data represented in the graph below among A, B, and C the products of respiration in C is likely to be

- | | |
|--------------------------------------|--|
| a) Alcohol + CO ₂ + 38ATP | b) Lactic acid + CO ₂ + 2ATP |
| c) Alcohol + CO ₂ + 2ATP | d) CO ₂ + H ₂ O + 3ATP |

- Give any two example for aerobic organism
 (or)

What are the difference and similarities between aerobic and anaerobic respiration.

39) The degree of convergence or divergence of light rays after refraction through the lens is expressed in terms of power of lens

- Which of the following statement is true
 a) A convex lens has 4 dioptre power having a focal length 0.25m
 b) A convex lens has – 4 dioptre power having a focal length – 0.25m
- If a lens can converge the sun rays at a point 20cm away from its optical centre the power of this lens is
 a) +2D b) – 2D c) +5D d) -5D
- Define the following
 a) power of a lens b) 1 Dioptre
 (or)

The power of a combination of two lenses XY to 5D, if the focal length of lens X is 15cm. State the nature and focal length of Lens Y.

General Instructions:

- (i) Question paper comprises Six Sections – A, B, C, D, E and F. There are 37 questions in the question paper. All questions are compulsory.
- (ii) Section A – From question 1 to 20 are MCQs of 1 mark each.
- (iii) Section B – Question no. 21 to 24 are Very Short Answer Type Questions, carrying 2 marks each. Answer to each question should not exceed 40 words.
- (iv) Section C contains Q.25 to Q.29 are Short Answer Type Questions, carrying 3 marks each. Answer to each question should not exceed 60 words
- (v) Section D – Question no. 30 to 33 are long answer type questions, carrying 5 marks each. Answer to each question should not exceed 120 words.
- (vi) Section-E - Questions no from 34 to 36 are case based questions with three sub questions and are of 4 marks each
- (vii) Section F – Question no. 37 is map based, carrying 5 marks with two parts, 37a from History (2 marks) and 37b from Geography (3 marks).
- (viii) There is no overall choice in the question paper. However, an internal choice has been provided in few questions. Only one of the choices in such questions have to be attempted.
- (ix) In addition to this, separate instructions are given with each section and question, wherever necessary.

SECTION – A

MCQs

(1 X 20 = 20)

- Who was proclaimed the king of united Italy in 1861?
 (a) Kaiser William I (b) Victor Emmanuel II (c) Germania (d) Charles – I
- Name the process by which the colonial state forced people to join the army
 (a) Boycott (b) bonded Labour (c) Forced recruitment (d) revolution
- Look at the picture given below. Identify the name of the person from the following options.
 (a) Ottovon Bismarck (b) Italia
 (c) Napoleon (d) General Dyer



- Arrange the following in chronological order :
 (i) Gandhiji sent a letter to Viceroy Irwin stating 11 demands
 (ii) Under the Presidency of Jawaharlal Nehru the Lahore Congress formalised the demand of “Purna Swaraj” for India
 (iii) Gandhi returned to India from South Africa
 (iv) Gandhiji withdrew the NCM, due to chauri chaura incident
Options:
 (a) (iv) , (ii) , (i) , (iii) (b) (iii) , (iv) , (ii) , (i) (c) (i) , (ii) , (iii) , (iv) (d) (ii) , (i) , (iii) , (iv)
- _____ is the first state in India which has made roof top rain water harvesting structure compulsory to all the houses across the state.
 (a) Karnataka (b) Kerala (c) Tamil Nadu (d) Andhra Pradesh
- In Barmer and Phalodi, all the houses are built with underground tanks
 Barmer and Phalodi are located in _____
 (a) Gujarat (b) Himachal Pradesh (c) Uttarakhand (d) Rajasthan
- In India ____ contributes approximately 22% of the total electricity produced
 (a) Tidal energy (b) Nuclear energy (c) Thermal energy (d) Hydro electricity
- Consider the following statements regarding power sharing arrangements in Belgium and identify the **incorrect** one from the following:
 (a) Equal number of members from Dutch and French community in the Central government
 (b) Separate government for Brussels with equal representation of communities
 (c) The state government to be subordinate to the central government
 (d) Community government elected by people belonging to one language community
- How many languages besides Hindi are recognised as scheduled Languages by the constitution of India
 (a) 21 (b) 22 (c) 23 (d) 24

10. Which of the following statement is **true** regarding the term “Secular State” in India
- Our constitution gives a special status to Hinduism
 - Our Constitution says no freedom to propagate any religion
 - There is no official religion for the Indian State
 - The Constitution of India, discriminate the people on the grounds of religion
11. Which one among the following pairs is correctly matched?
- | Column A | | Column B |
|---------------------|---|-----------|
| (a) State List | – | Defence |
| (b) Concurrent List | – | Trade |
| (c) Union List | – | Banking |
| (d) Union territory | – | Karnataka |
12. There are two statements marked as Assertion (A) and Reason (R). Mark your answer as per the codes provided below: (1)
- Assertion (A) : The formation of Linguistic states has actually made the country, more united
- Reason (R) : It has also made administration easier
- Both A and R are true and R is the correct explanation of A
 - Both A and R are true but R is not the correct explanation of A
 - A is true but R is false
 - A is false but R is true
13. In which year the Equal Remuneration Act was passed?
- 1976
 - 1974
 - 1972
 - 1970
14. majority of India’s petroleum production is from _____
- Gujarat
 - Mumbai High
 - Assam
 - None of these
15. Monazite sands (Kerala) are rich in _____
- Thorium
 - Uranium
 - Platinum
 - Radium
16. Lime stone is the basic raw material for _____
- Paper industry
 - Cement indutry
 - Sugar industry
 - Textile industry
17. District roads connect the district headquarters with other places in a district. These roads are maintained by _____
- Zilla Parishad
 - State Govenment
 - Central Governmant
 - Village Panchayat
18. _____ is the deepest landlocked and well – protected port in India
- Paradip
 - Vishkapatnam
 - Kochi
 - Tutucorin
19. When Ford motors established its manufacturing unit in India it had collaborated with _____
- Maruti Suzuki
 - Tata Motors
 - Hero Honda
 - Mahindra & Mhindra
20. Tax on import is an example of _____
- Investment barrier
 - Disinvestment barrier
 - trade barrier
 - Privatisation barrier

SECTION – B

Very short answer questions:

(4 X 2 = 8)

- What were the impacts of Secret Societies?
 - Distinguish between Unitary Government and Federal Government
 - Which is the primary road system in India? Mention any one point about it.
 - How would flexibility in labour laws help companies?
- (or)
- Where do MNCs setup production units?

SECTION – C

Short answer based questions:

(5 X 3 = 15)

- What were the ideas of Conservatives?
- (or)
- Write a note on Greek War of Independence
- What are the causes of water scarcity? Mention any 6 points.
 - Distinguish between open cast mining and shaft mining.
 - “The focus on caste in polities can sometimes give an impression that elections are all about caste and nothing else. that is far from true” – Explain
 - How to create more employment in rural areas? (Any 3 points)

SECTION – D

Long answer based questions:

(4 X 5 = 20)

30. "Large sections of Muslims did not respond to the call for a united struggle during the CDM" – Explain
(or)
Why was Simon Commission Constituted? Why was the commission rejected by Indians?
31. Which is the principal mode of transportation for freight and passengers in India? Mentions any four merits of that transportation
(or)
Discuss the role of mass communication in India.
32. What are the key features of federalism?
(or)
"The constitution of India was amended in 1992, to make the third tier of democracy more powerful and effective" – Explain
33. Surya works as Manager in a nationalised bank. He goes to the bank at 8.30 AM and turns at 5 PM. He gets a week off on every Sunday. When he avails casual leave, he is paid salary by the employer. Vivek works in a grocery shop. He goes to the shop at 6.30 AM and returns home at 9.30 PM. He does not get wage if he avails leave. He has to work for all the seven days of the week. Compare and contrast the working conditions of Surya and Vivek.
(or)
Explain how public sector contributes to the economic development of the nation

SECTION – E

Case based questions:

(3 X 4 = 12)

34. Read the source given below and answer the question that follows:

The most serious source of nationalist tension in Europe after 1871 was the area called the Balkans. The Balkans was a region of geographical and ethnic variation comprising modern – day Romania, Bulgaria, Albania, Greece, Macedonia Croatia, Bosnia – Herzegovina, Slovenia, Serbia and Montenegro. Whose inhabitants were broadly known as the Slavs. A large part of the Balkans was under the control of the Ottoman Empire. The spread of the ideas of romantic nationalism in the Balkan together with the disintegration of the Ottoman Empire made this region very explosive.

All through the nineteenth century the Ottoman Empire had sought to strengthen itself through modernisation and internal reforms but with very little success. One by one, its European subject nationalities broke away from its control and declared independence. Hence the rebellious nationalities in the Balkans thought of their struggles as attempts to win back their long-lost independence

- 34.1. Name the regions which are included in Balkans?
34.2. Who were called as slavs?
34.3. Who controlled a large part of the Balkans?
34.4. Why the Balkan region was very explosive?

35. Read the following passage carefully and answer the questions given below:

Liberalisation of foreign trade and investment in India was supported by some very powerful organisations. These organisations say that barriers to foreign trade and investment are harmful.

World Trade Organisation is one whose aim is to liberalise international trade. Started at the initiative of the developed countries, WTO establishes rules regarding international trade. At present, 160 countries of the world are members of the WTO.

Though WTO is supposed to allow free trade for all, in practice it is seen that the developed countries have unfairly retained trade barriers. On the other hand, WTO rules have forced the developing countries to remove the trade barriers.

- 35.1 What is the aim of the World Trade organisation?
35.2. How many countries are currently the members of WTO?
35.3. WTO was started at the initiative of _____
35.4. Is the trade among countries free and fair?

36. Read the given extract and answer the following questions:

Belgium is a small country in Europe, smaller in area than the state of Haryana. It has borders with France, the Netherlands, Germany and Luxembourg. It has a population of a little over one crore, about half the population of Haryana.

The Ethnic Composition of this small country is very complex of the country's total population, 59 percent lives in the Flemish region and speaks Dutch language. Another 40 percent people live in the Wallonia region and speak French. Remaining one percent of the Belgians speak German. In the capital city Brussels, 80 percent people speak, French while 20 percent are Dutch – speaking.

- 36.1. Name the borders of Belgium.
- 36.2. Who lives in the Flemish region and what language they speak?
- 36.3. What is the capital of Belgium and write about the ethnic composition of it

SECTION – F

Map Skill Based Questions:

37. (a) Two places A and B have been marked on the given political map of India. Identify them and write their correct names on the lines drawn near them. (2 X 1 = 2)
- (A) The place where the congress leaders discussed about NCM in September 1920
- (B) The place where Jallian Walabagh incident occured
- (b) On the political map of India, locate the following places. (6 X 1/2 = 3)
- (i) Nagarjuna Sagar Dam
- (ii) Sardar Sarovar Dam
- (ii) Mayurbunj
- (iv) Digboi
- (v) Netaji Subash Chandra Bose International Airport
- (vi) Paradip Port

General Instructions:

1. Question paper comprises Six Sections – A, B, C, D, E and F. There are 37 questions in the question paper. All questions are compulsory.
2. Section A – From question 1 to 20 are MCQs of 1 mark each.
3. Section B – Question no. 21 to 24 are Very Short Answer Type Questions, carrying 2 marks each. Answer to each question should not exceed 40 words.
4. Section C contains Q.25 to Q.29 are Short Answer Type Questions, carrying 3 marks each. Answer to each question should not exceed 60 words
5. Section D – Question no. 30 to 33 are long answer type questions, carrying 5 marks each. Answer to each question should not exceed 120 words.
6. Section-E - Question no from 34 to 36 are case based questions with three sub questions and are of 4 marks each
7. Section F – Question no. 37 is map based, carrying 5 marks with two parts, 37a from History (2 marks) and 37b from Geography (3 marks).
8. There is no overall choice in the question paper. However, an internal choice has been provided in few questions. Only one of the choices in such questions have to be attempted.
9. In addition to this, separate instructions are given with each section and question, wherever necessary.

SECTION – A

(20 x 1 = 20)

- 1) Read the following statements and identify the correct one statement regarding nation states.
 - a) Citizens share a common sense of shared identify or history
 - b) Nation state is a state ruled by one absolute ruler
 - c) Commonness is forged through linguistic factor only.
 - d) Nation states are directly ruled by people and based on conservative society.
- 2) Which of the following resolution was adopted at the Lahore congress session in December, 1929?
 - a) Civil disobedience movement
 - b) Purnaswaraj
 - c) Non – cooperation movement
 - d) Khilafat movement
- 3) Look at the picture and identify the planting of tree.



- a) The planting of Tree of conservative
 - b) The planting of Tree of Liberty
 - c) The planting of Tree of Democracy
 - d) The planting of Tree of Monarchy
- 4) Arrange the following statements in chronological order :
 - I) Gandhiji called off the Non cooperation movement
 - II) Under the Inland Emigration Act, Plantation workers were not permitted to leave the plantations.
 - III) Alluri Sitaram Raju was captured and executed by the British
 - IV) Vallabhbhai Patel led the peasant movement in Borrdoli.
 - a) IV, II, I, III
 - b) I, IV, II, III
 - c) II, III, I, IV
 - d) II, I, III, IV
 - 5) Sardar sarovar Dam is one of the largest water resource projects of India covering four states.
 - a) Maharashtra, Madhya Pradesh, Gujarat and Rajasthan
 - b) Maharashtra, Gujarat , Rajasthan and Uttar Pradesh
 - c) Madhya Pradesh, Uttar Pradesh, Chhattisgarh and Gujarat
 - d) Madhya Pradesh, Maharashtra, Uttar Pradesh and Gujarat
 - 6) Match the following:

A) Igneous and metamorphic rocks	-	i) Coal
B) Sedimentary rocks	-	ii) Magnesium
C) Placer deposits	-	iii) Copper
D) Ocean water	-	iv) Gold

Options:

 - a) (A- ii), (B – iii), (C – i), (D- iv)
 - b) (A-iv), (B – ii), (C – i), (D – iii)
 - c) (A – iii), (B- i), (C – iv), (D- ii)
 - d) (A – i), (B – iv), (C – iii) (D – ii)
 - 7) Choose the correct statement from the option given below:
 - a) The largest wind farm cluster is located from Nagarcoil to Jaisalmer
 - b) The largest wind farm cluster is located in Tamil Nadu from Nagarcoil to Madurai
 - c) The largest wind farm cluster is located from Nagarcoil to Kerala

- d) The largest wind farm cluster is located in Jaisalmer
- 8) Consider the following statements regarding power sharing and identify the incorrect statement:
- Power sharing reduce the possibility of conflict between social groups
 - Power sharing is good for democracies
 - Power sharing is the very spirit of democracy
 - Power sharing allows the rule of majority
- 9) In which year the constitution was amended to make the third – tier of democracy more powerful and effective?
- 1982
 - 1991
 - 1992
 - 1990
- 10) Which of the following statement is true?
- Indian society is still a patriarchal society
 - The Equal Remuneration Act was enacted in 1986
 - In Panchayat Raj 50% of seats are reserved for women.
 - In India, the proportion of women in legislature has been very high
- 11) Which one among the following pairs is correctly matched?
- | List – I | List – II |
|--|----------------------|
| a) Power shared among different organs of the government | Federal government |
| b) Power shared among government at different levels | Community government |
| c) Power shared by different social groups | Separation of powers |
| d) Power shared by two (or) more political parties | Coalition government |
- 12) There are two statements marked as Assertion(A) and Reason(R) . Mark your answer as per the codes provided below.
- Assertion (A): Promotion of Hindi continues to be the official policy of the government of India.
- Reason (R): Much of the government work takes place in the official language of the concerned state.
- Both A and R are true and R is the correct explanation of A
 - Both A and R are true and R is not the correct explanation of A
 - A is true but R is false
 - A is false but R is true
- 13) In local – self government institutions, atleast one – third of all positions are reserved for:
- Men
 - Women
 - Scheduled Tribes
 - Children
- 14) Which roads received special impetus under the Pradhan Mantri Grameen Sadak Yojana?
- District Roads
 - Rural Roads
 - State Highways
 - Border Roads
- 15) In which language the largest number of newspapers are published?
- Urdu
 - Tamil
 - Telugu
 - Hindi
- 16) Choose the incorrect option:
- | | | |
|------------------------------|---|-----------------|
| a) Teacher | - | Tertiary sector |
| b) Workers in cement factory | - | Primary sector |
| c) Workers in quarry | - | Primary sector |
| d) Potter | - | Secondary |
- 17) Chandru is working as a daily wage labourer in a construction site. In which sector does he work?
- Primary sector
 - Secondary sector
 - Organised sector
 - Unorganised sector
- 18) Which one of the following Indian industries has been hit hard by globalization?
- Iron and steel
 - Fertilizer
 - Toy making
 - Jute
- 19) There are two statements marked as Assertion(A) and Reason(R). Mark your answer as per the codes provided below:
- Assertion: The government could place a limit on the number of goods that can be imported . This is known as quotas.
- Reason: Quotas can be used as trade barriers.
- Both A and R are true and R is the correct explanation of A
 - Both A and R are true but R is not the correct explanation of A
 - A is true but R is false
 - A is false but R is true
- 20) Choose the correct option:
- | | | |
|-----------------|---|----------------|
| a) Tata motors | - | Nuts and bolts |
| b) Infosys | - | Auto mobiles |
| c) Ranbaxy | - | Medicines |
| d) Asian paints | - | IT |

SECTION – B

(4X2=8)

- 21) Write a short note about ‘Simon Commission’
- 22) How Indian women face discrimination and oppression in various ways? Explain (any two)
- 23) Why is air travel preferred in the north – eastern states?
- (or)
- Mention the advantages of pipelines

- 24) Where do MNCs setup their production?

SECTION – C

(5X3=15)

- 25) When and why was the Zollverein formed?
- (or)

How Ireland was incorporated into the U.K in 1801?

- 26) What is fair globalisation? What is the role of government in fair globalisation?
- 27) How can Employment be created in rural areas?
- 28) What are Feminist movements? What were their major demands?
- 29) Classify the economic activities based on ownership.

SECTION – D

(4x5=20)

30) What were the features of the civil disobedience movement of 1930?

(or)

Explain the reasons for the lukewarm response of some Muslim organisations to the civil disobedience Movement.

31) In ancient India, along with the sophisticated hydraulic structures, there existed an extra ordinary tradition of water – harvesting system – Explain.

(or)

In recent years, multipurpose projects and large dams have come under great scrutiny and opposition for a variety of reasons. Why? Give any five reasons.

32) "The creation of Linguistic states was the first and a major test for democratic politics in our country".

Justify the statement.

(or)

What makes India a federation?

33) The distribution pattern of the Railway network in the country has been largely influenced by physiographic, economic and administrative factors. Explain.

(or)

Advancement of international trade of a country is an index to its economic prosperity. It is therefore, considered the economic barometer for a country. Explain

SECTION – E (Case based questions)

(4x3=12)

34) Read the source given below and answer the questions that follow: (4x1=4)

The first clear expression of nationalism came with the French Revolution in 1789. France, as you would remember, was a full-fledged territorial state in 1789 under the rule of an absolute monarch. The political and constitutional changes that came in the wake of the French Revolution led to the transfer of sovereignty from the monarchy to a body of French citizens. The revolution proclaimed that it was the people who would henceforth constitute the nation and shape its destiny.

34.1) What were the principles of French Revolution?

34.2) What was the political situation in France at that time?

34.3) Mention the year of outbreak of French Revolution?

34.4) French Revolution transferred the sovereignty from whom to whom?

35) Read the source given below and answer the questions that follow:

(4x1=4)

Energy is required for all activities. It is needed to cook, to provide light and heat, to propel vehicles and to drive machinery in industries

Energy can be generated from fuel minerals like coal, petroleum, natural gas, uranium and from electricity. Energy resources can be classified as conventional and non-conventional sources. Conventional sources include: firewood, cattle dung cake, coal, petroleum, natural gas and electricity (both hydel and thermal). Non-conventional sources include solar, wind, tidal, geothermal, biogas and atomic energy. Firewood and cattle dung cake are most common in rural India. According to one estimate more than 70 per cent energy requirement in rural households is met by these two ; continuation of these is increasingly becoming difficult due to decreasing forest area. Moreover, using dung cake too is being discouraged because it consumes most valuable manure which could be used in agriculture.

35.1) What are the various conventional and non - conventional sources of energy?

35.2) Name the two common energy sources in rural India.

35.3) Why is the usage of firewood and dung cake discouraged?

35.4) Which is the most abundantly available fossil fuel in India?

36) Read the source given below and answer the questions that follow:

(4x1=4)

At the end of this civil war, Lebanon's leaders came together and agreed to some basic rules for power sharing among different communities. As per these rules, the country's President must belong to the Maronite sect of Catholic Christians. The Prime Minister must be from the Sunni Muslim community. The post of Deputy Prime Minister is fixed for Orthodox Christian sect and that of the Speaker for Shia Muslims. Under this pact, the Christians agreed not to seek French protection and the Muslims agreed not to seek unification with the neighbouring state of Syria. When the Christians and Muslims came to this agreement, they were nearly equal in population. Both sides have continued to respect this agreement though now the Muslims are in clear majority.

36.1) The President of Beirut belongs to which community?

36.2) The post of Deputy Prime minister is fixed for whom?

36.3) Which post was allotted for Shia Muslims ?

36.4) Which city is the capital of Lebanon?

SECTION – F (Map skill based questions)

(2x1=2)

37.a) In the given map of India Political, identify the following places by using the information given below: (2)

A) Mark the place where the cotton mill workers Satyagraha was organized in 1918. (1)

B) Mark the place where the India National Congress Session was held in December 1920. (1)

37.b) On the given political map of India locate and label the following places by using the information given below: (6x1/2=3)

i) Hirakud – A dam

ii) Bokaro - A coal field

iii) Ankaleshwar – An oil field

iv) Singrauli – A Thermal power plant

- v) Chennai – A seaport
- vi) Raja sansi (Sri Guru Ram Dass Jee) – An International airport

General Instructions:

- (i) Question paper comprises Six Sections – A, B, C, D, E and F. There are 37 questions in the question paper. All questions are compulsory.
- (ii) Section A – From question 1 to 20 are MCQs of 1 mark each.
- (iii) Section B – Question no. 21 to 24 are Very Short Answer Type Questions, carrying 2 marks each. Answer to each question should not exceed 40 words.
- (iv) Section C contains Q.25 to Q.29 are Short Answer Type Questions, carrying 3 marks each. Answer to each question should not exceed 60 words
- (v) Section D – Question no. 30 to 33 are long answer type questions, carrying 5 marks each. Answer to each question should not exceed 120 words.
- (vi) Section-E - Question no from 34 to 36 are case based questions with three sub questions and are of 4 marks each
- (vii) Section F – Question no. 37 is map based, carrying 5 marks with two parts, 37a from History (2 marks) and 37b from Geography (3 marks).
- (viii) There is no overall choice in the question paper. However, an internal choice has been provided in few questions. Only one of the choices in such questions have to be attempted.
- (ix) In addition to this, separate instructions are given with each section and question, wherever necessary.

SECTION – A**MCQs****(1 X 20 = 20)**

1. "When France Sneezes, the rest of Europe catches cold". Who said these words. Identify the correct one from the following options. (1)

(a) Giuseppe Garibaldi (b) Metternich (c) Cavour (d) Giuseppe Mazzini

2. In which congress session, under the presidency of Jawaharlal Nehru formalised the demand of "Purna Swaraj" (1)

(a) Calcutta Session (b) Lahore Session (c) Karachi Session (d) Nagpur Session

3. Look at the picture given below. Identify the name of the allegory from the following options. (1)

(a) Marianne (b) Bharatmata
(c) Germania (d) Britannia



4. Arrange the following in chronological order (1)

(I) Poona pact was signed (II) Gandhi Irwin pact was signed
(III) Simon commission arrived in India (IV) The Non co – operation khilafat movement began

Options:

(a) I , III , II , IV (b) IV , III , II , I (c) III , I , II , IV (d) IV , II , I , III

5. Which is the first state in India that has made rain water harvesting compulsory? (1)

(a) Gujarat (b) Kerala (c) Himachal Pradesh (d) Tamil Nadu

6. What do you infer from the above picture? (1)

(a) We should share our umbrella with others
(b) We should follow rain water harvesting
(c) We should not go out when it rains
(d) We should carry umbrella during rainy season



7. Name the leading producer of iron ore in India (1)

(a) Jharkhand (b) Madhya Pradesh (c) Odisha (d) Rajasthan

8. Consider the following statements regarding power sharing arrangements in Belgium and identify the incorrect one from the following: (1)

(a) Equal number of members from Dutch and French community in the central government
(b) Separate government for Brussels with equal representation of communities
(c) Single community can make decision unilaterally
(d) Community government elected by people belonging to one language community

9. Which one of the following subject comes under the legislation of centre and state in India (1)

(a) Education (b) Forests (c) Banking (d) Trade

10. Which of the following statement is true regarding literacy rate. (1)

(a) The literacy rate among women is only 54% compared with 76% among men
(b) A small proportion of boys go for higher studies
(c) When we look at school results girls perform as well as boys, if better in some places
(d) Parents prefer to spend their resources only for girl's education

11. Which one among the following pair is correctly matched? (1)

List – I

–

List – II

- (a) 25 countries – Scheduled Languages
 (b) USA , Switzerland and Australia – coming together federation
 (c) 22 Languages – local self government
 (d) Third level government – Federal Political system
12. There are two statements marked as Assertion (A) and Reason (R). Mark your answer as per the codes provided below: (1)
 Assertion (A) : Assam, Nagaland, Arunchal Pradesh and mizoram enjoy special powers
 Reason (R) : Due to their peculiar social and historical circumstances
 (a) Both A and R are true and R is the correct explanation of A
 (b) Both A and R are true but R is not the correct explanation of A
 (c) A is true but R is false
 (d) A is false but R is true
13. Name the act which was passed by Srilanka government to prove majoritarianism (1)
 (a) 1956 Act (b) 1935 Act (c) 1950 Act (d) 1919 Act
14. Where is the largest wind farm cluster of India located? (1)
 (a) Tamil Nadu from Nagarcoil to Madurai (b) Tamil Nadu from Nagarcoil to Kanyakumari
 (c) Tamil Nadu from Nagarcoil to Tuticorin (d) Tamil Nadu from Nagarcoil to Rameshwaram
15. What is the basic raw material for cement industry? (1)
 (a) Gypsum (b) Silica (c) Limestone (d) Coal
16. Choose the cheapest means of transport? (1)
 (a) Railways (b) Waterways (c) Roadways (d) Pipelines
17. Match the following: (1)
- | A | – | B |
|-----------------------------------|---|-----------------------------------|
| (1) Artificial Port | – | (a) Goa |
| (2) Deendayal Port | – | (b) Vishkapatnam |
| (3) Riverine Port | – | (c) Kolkata |
| (4) Premier iron exporting Port | – | (d) Chennai |
| | – | (e) Kandla |
| (A) 1 – a , 2 – c , 3 – b , 4 – d | | (B) 1 – d , 2 – e , 3 – c , 4 – a |
| (C) 1 – d , 2 – a , 3 – c , 4 – b | | (D) 1 – d , 2 – c , 3 – b , 4 – a |
18. Gardener comes under _____ sector based on nature of work (1)
 (a) Primary (b) Unorganised (c) Tertiary (d) Secondary
19. Into which sector will you classify Air India based on ownership? (1)
 (a) Joint or mixed (b) Public (c) Co – operative (d) Private
20. Which of the following statements is incorrect regarding MNCs (1)
 (a) MNCs setup production jointly with some of the local companies.
 (b) MNCs set up SEZs with world class facilities to attract foreign investment
 (c) The most common route for MNC investments is to buy up local companies and then to expand production
 (d) Large MNCs in developed countries place orders for production with small producers. Example – garments, foot wear & sports items

SECTION – B

Very short answer questions: (4 X 2 = 8)

21. What is meant by nation state and Plebiscite? (2)
 22. Mention the provisions that constitute India in to a secular country (2)
 23. Mention any two advantages of airways? (2)
 24. What does the history of developed countries indicate about the shift that have taken place between sectors? (2)
 (or)
 How to create more employment in rural areas? Give any two points.

SECTION – C

Short answer based questions: (5 X 3 = 15)

25. Explain the civil code of 1804. (3)
 (or)
 What was Zollverein? What was its impacts?
 26. Which is the basic mineral and the backbone of industrial development? What are its types? Distinguish between them? (1 + 1 + 1 = 3)

27. How do you classify the sectors based on their employment conditions? Bring out the differences between

them. Mention any four points.

(1 + 2 = 3)

28. Explain Horizontal power sharing.

(3)

29. What is fair globalization? What is the role of government in fair globalization? Give any four points.

(1 + 2 = 3)

SECTION – D

Long answer based questions:

(4 X 5 = 20)

30. Explain the course of the salt March.

(5)

(or)

What was Satyagraha? Name the Satyagrahas were organised by Gandhiji?

31. "In India roads have preceded railways. They still have an edge over railways" – Justify this statement with atleast five arguments.

(or)

What is the latest arrival in the transport map of India? What are its advantages? (1 + 4 = 5)

32. What are the key features of federalism?

(or)

(5)

Distinguish between coming together federation and Holding together federation.

33. State the impact of Globalisation in our day to day life?

(or)

(5)

How does foreign trade lead to integration of markets across countries

SECTION – E

Case based questions:

(3 X 4 = 12)

34. Read the source given below and answer the question that follows:

Many nationalists thought that the struggle against the British could not be won through non-violence. In 1928, the Hindustan Socialist Republican Army (HSRA) was founded at a meeting in Ferozeshah Kotla ground in Delhi. Amongst its leaders were Bhagat Singh, Jatin Das and Ajoy Ghosh. In a series of dramatic actions in different parts of India, the HSRA targeted some of the symbols of British power. In April 1929, Bhagat Singh and Batukeswar Dutta threw a bomb in the Legislative Assembly. In the same year there was an attempt to blow up the train that Lord Irwin was travelling in. Bhagat Singh was 23 when he was tried and executed by the colonial government. During his trial, Bhagat Singh stated that he did not wish to glorify 'the cult of the bomb and pistol' but wanted a revolution in society.

34.1. In which year Hindustan Socialist Republican army was founded?

(1)

34.2. Who were the leaders of Hindustan Socialist Republican army?

(1)

34.3. Who has thrown a bomb in the Legislative Assembly?

(1)

34.4. What was the message stated by Bhagat Singh during his trial?

(1)

35. Read the given passage and answer the following questions:

Many thought that given the disadvantages and rising resistance against the multipurpose projects, water harvesting system was a viable alternative, both socio-economically and environmentally. In ancient India, along with the sophisticated hydraulic structures, there existed an extraordinary tradition of water-harvesting system. People had in-depth knowledge of rainfall regimes and soil types and developed wide ranging techniques to harvest rainwater, groundwater, river water and flood water in keeping with the local ecological conditions and their water needs. In hill and mountainous regions, people built diversion channels like the 'guls' or 'kuls' of the Western Himalayas for agriculture. 'Rooftop rainwater harvesting' was commonly practised to store drinking water, particularly in Rajasthan. In the flood plains of Bengal, people developed inundation channels to irrigate their fields. In arid and semi-arid regions, agricultural fields were converted into rain fed storage structures that allowed the water to stand and moisten the soil like the 'khadins' in Jaisalmer and 'Johads' in other parts of Rajasthan.

35.1. Suggest a viable alternative for multi purpose projects?

(1)

35.2. What are inundation channels?

(1)

35.3. How is rain water harvesting followed in arid and semi arid regions?

(1)

35.4. What are guls or kuls?

(1)

36. Read the given extract and answer the following questions:

The Srilankan Tamils launched parties and struggles for the recognition of Tamil as an official language, for regional autonomy and equality of opportunity in securing education and jobs. But their demand for more autonomy to provinces populated by the Tamils was repeatedly denied. By 1980s several political organisations were formed demanding an independent Tamil Eelam (State) in northern and eastern parts of Sri Lanka.

The distrust between the two communities turned into widespread conflict. It soon turned into a Civil War. It ended in 2009.

36.1. What was the demand of Srilankan Tamils?

(1)

- 36.2. What is Tamil Eelam state?

(1)
- 36.3. What is meant by Civil War?

(1)
- 36.4. When was the Civil War ended?

(1)

SECTION – F

Map Skill Based Questions:

37. (a) Two places A and B have been marked on the given political map of India. Identify them and write their correct names on the lines drawn near them.

(2 X 1 = 2)

(A) The place where the congress session was held in 1927

(1)

(B) The place where Gandhiji called off the Non co – operation movement.

(1)
- (b) Locate the following using appropriate colours and symbols on the same on the same given political map of India. Write the Q.No and name of each item near its location.

(6 X 1/2 = 3)

(i) Ramagundam thermal power plant

(ii) Sardar Sarowar dam

(iii) Paradwip sea port

(iv) Hirakud dam

(v) Sri Guru Ramdoss Jee (Raja Sansi) International Airport

(vi) Tarapur atomic power plant
